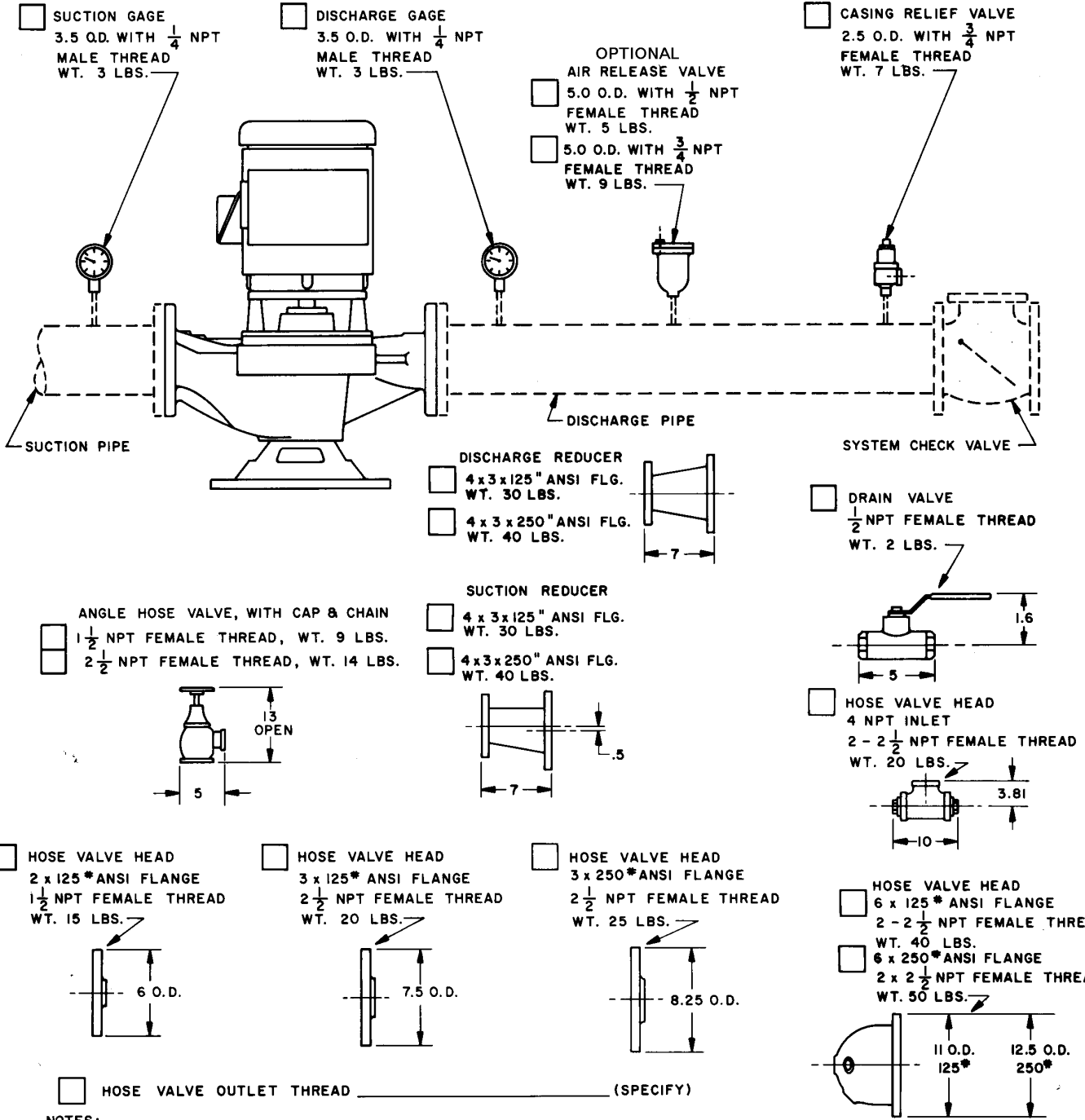




FIRE FITTINGS 175, 250 PSI
 OUTLINE DIMENSIONS

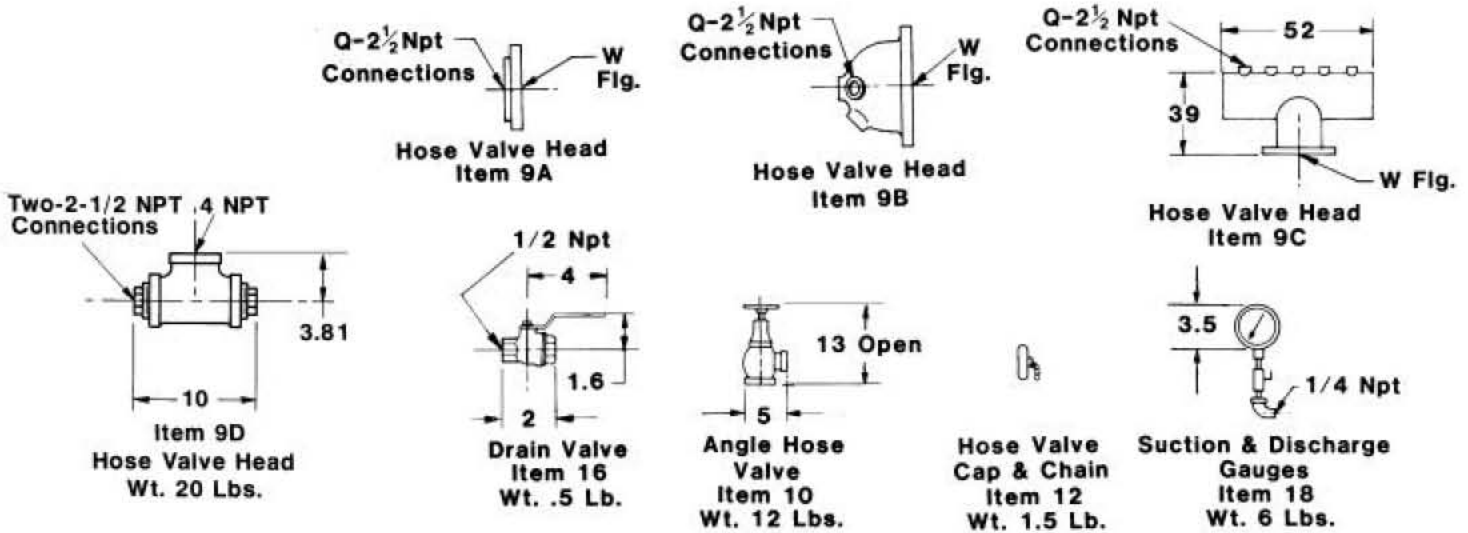
- 50 GPM 100 GPM 150 GPM 200 GPM 250 GPM 300 GPM 400 GPM
 450 GPM 475 GPM 499 GPM 500 GPM 750 GPM



- NOTES:
 1. ONLY ITEMS MARKED WILL BE FURNISHED.
 2. ALL DIMENSIONS ARE MAXIMUM AND ARE IN INCHES.
 3. ALL ITEMS WILL SHIP LOOSE FOR FIELD MOUNTING IN THE SUCTION OR DISCHARGE PIPE.
 4. AIR RELEASE VALVE & CASING RELIEF VALVE MUST BE MOUNTED IN A VERTICAL POSITION. DO NOT PLUG OUTLET.



Fire Pump Fittings Outline



- Notes: 1. Only Items Marked will be furnished
2. All Dimensions are in inches
3. Hose Valve Threading

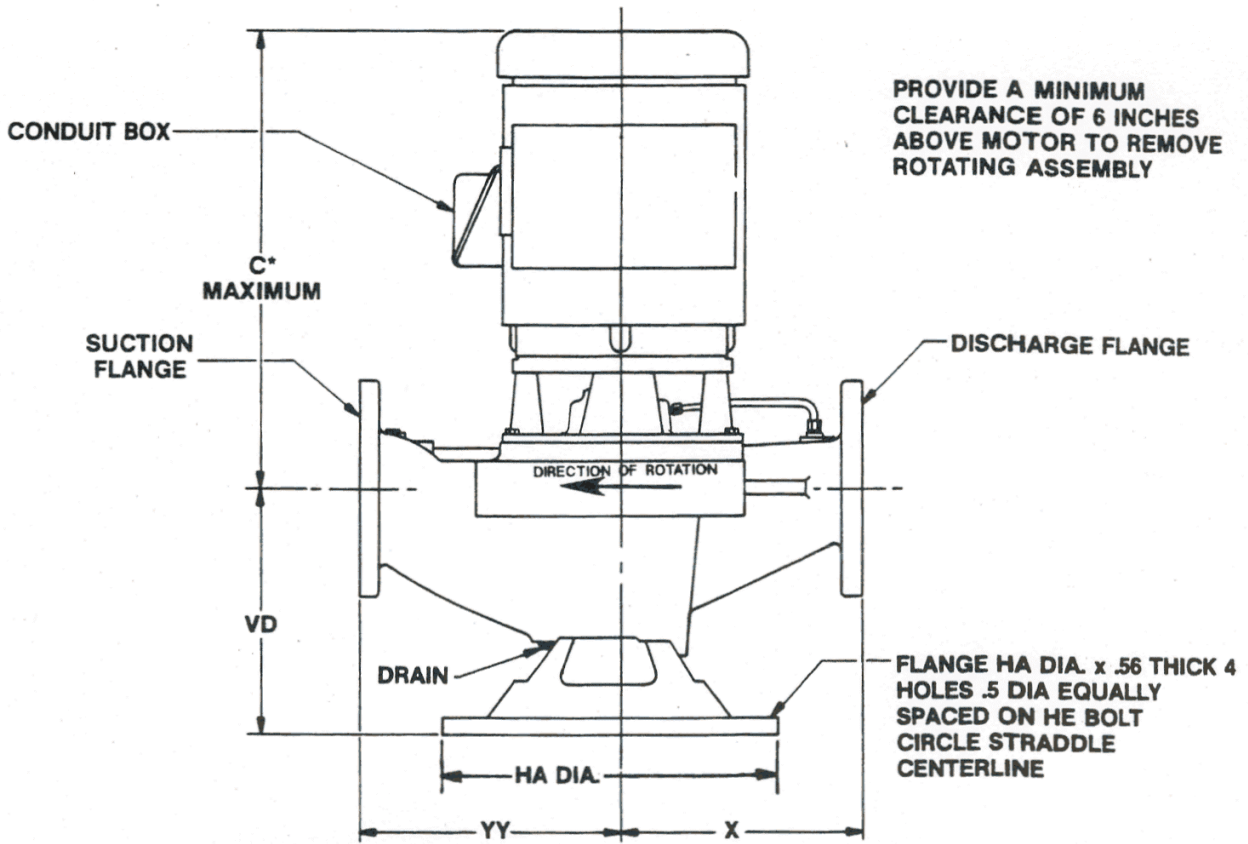
-(Specify)

| Item No. | GPM | GPM | GPM | GPM | GPM | Description | Maximum Working Pressure PSIG | | | | | | | |
|----------|--|-----------|------------|--------------|------------------|-----------------|-------------------------------|-----------------|-------------|-----|------------------------|---|---|--|
| 9A | 250 | - | - | - | - | Hose Valve Head | 175 | 400 | - | - | - | - | - | |
| 9B | 500 | 750 | 1000 | 1250 | - | Hose Valve Head | 175 | 200 | 400 | 600 | - | - | - | |
| 9B | 1500 | 2000 | 2500 | - | - | Hose Valve Head | 175 | 200 | 400 | 600 | - | - | - | |
| 9C | 3000 | 3500 | 4000 | 4500 | 5000 | Hose Valve Head | 150 | 175 | 300 | 600 | - | - | - | |
| 9D | 500 | - | - | - | - | Hose Valve Head | 300 | - | - | - | - | - | - | |
| 10 | Angle Hose Valve | | Qty of | | Wt. Lbs. | | 300 | - | - | - | - | - | - | |
| 12 | Cap & Chain | | Qty of | | Wt. Lbs. | | - | - | - | - | - | - | - | |
| 16 | Drain Valve | | | | | | 400 | 600 | - | - | - | - | - | |
| 18 | Suction and Discharge Gauge Set (Each Furnished with Gauge Cock) | | Gauge Type | | Dial Graduations | | | | | | | | | |
| | | | | | Outer Scale | | | | Inner Scale | | | | | |
| | | | | | Suction | | - 15 PSI to 0 to 300 PSI | | | | - 1 BAR to 0 to 20 BAR | | | |
| | | | | | Discharge | | 0 PSI to 300 PSI | | | | 0 to 20 BAR | | | |
| | | Discharge | | 0 to 600 PSI | | | | 0 BAR to 41 BAR | | | | | | |

| ANSI Std. Dimension Flange | Pump Rating GPM | | | | | | | | | | | | | | |
|----------------------------|-----------------|-----|-----|-----|------|------|------|------|------|------|------|------|------|------|--|
| | Dimension | 250 | 500 | 750 | 1000 | 1250 | 1500 | 2000 | 2500 | 3000 | 3500 | 4000 | 4500 | 5000 | |
| 125 | W | 3 | 6 | 6 | 6 | 8 | 8 | 8 | 10 | - | - | - | - | - | |
| 125 | W | 3 | 6 | 8 | 8 | 10 | 10 | 10 | 12 | - | - | - | - | - | |
| 150 | W | 3 | 4 | 6 | 6 | 8 | 8 | 8 | 10 | 10 | 12 | 12 | 12 | 12 | |
| 150 | W | - | - | - | - | - | - | - | - | 12 | 14 | 14 | 14 | 14 | |
| 250 | W | 3 | 6 | 8 | 8 | 10 | 10 | 10 | 12 | - | - | - | - | - | |
| 300 | W | 3 | 4 | 6 | 6 | 8 | 8 | 8 | 10 | 10 | 12 | 12 | 12 | 12 | |
| 300 | W | - | - | - | - | - | - | - | - | 12 | 14 | 14 | 14 | 14 | |
| Quantity | Q | 1 | 2 | 3 | 4 | 6 | 6 | 6 | 8 | 12 | 12 | 16 | 16 | 20 | |
| Weight Lb. (Maximum) | | 25 | 50 | 84 | 84 | 150 | 150 | 150 | 255 | 360 | 360 | 360 | 360 | 360 | |
| Item No. | | 9A | 9B | 9B | 9B | 9B | 9B | 9B | 9B | 9C | 9C | 9C | 9C | 9C | |



INLINE FIRE PUMPS
UL & ULC LISTED
(Packed Type)
OUTLINE DIMENSIONS



| ✓ | MODEL | DISCHARGE FLANGE SIZE x ANSI Lb RATING | SUCTION FLANGE SIZE x ANSI Lb RATING | PUMP DIMENSIONS IN INCHES | | | | | PUMP WEIGHT Lbs |
|---|---------|--|--------------------------------------|---------------------------|-------|-------|-------|-------|-----------------|
| | | | | HA | HE | VD | YY | X | |
| | 2.5PVFB | 2.5 x 125 | 2.5 x 125 | 10 | 8.88 | 8.68 | 8.50 | 8.00 | 113 |
| | 3PVF8 | 3 x 125 | 3 x 125 | 10 | 8.88 | 8.94 | 9.50 | 8.50 | 139 |
| | 3PVF11# | 3 x 125 | 3 x 125 | 10 | 8.88 | 8.81 | 10.88 | 11.38 | 165 |
| | 3PVF11# | 3 x 250 | 3 x 125 | 10 | 8.88 | 8.81 | 10.88 | 11.38 | 170 |
| | 4PVF8G | 4 x 125 | 4 x 125 | 11 | 9.88 | 9.56 | 11.00 | 10.00 | 175 |
| | SPVF7 | 5 x 125 | 5 x 125 | 11 | 9.88 | 10.00 | 11.00 | 9.50 | 150 |
| | 5PVF11# | 5 x 125 | 5 x 125 | 11 | 9.88 | 9.81 | 11.62 | 11.62 | 180 |
| | 5PVF11# | 5 x 250 | 5 x 125 | 11 | 9.88 | 9.81 | 11.62 | 11.62 | 180 |
| | 6PVF10# | 6 x 250 | 6 x 125 | 11 | 9.50* | 14.00 | 16.00 | 14.00 | 400 |

| ✓ | MOTOR HP | 7.5 | 10 | 15 | 20 | 25 | 30 | 40 | 50 | 60 | 75 | 100 | 125 |
|---|-----------------------------|-----|-----|-----|-----|-----|-----|-----|-----|-----|-----|-----|-----|
| | ODP JPV MOTOR FRAME SIZE \$ | 184 | 213 | 215 | 254 | 256 | 284 | 286 | 324 | 326 | 364 | 365 | 404 |
| | C MAX (In Inches) * | 27 | 29 | 30 | 36 | 37 | 39 | 40 | 41 | 42 | 45 | 46 | 48 |
| | ODP MOTOR WEIGHT LBS. | 97 | 105 | 203 | 210 | 240 | 295 | 329 | | | 600 | | 850 |

*May be less with different make motors or enclosures.

284 JPV is the minimum motor size on these pumps

*0.88 Dia. 8 Holes, 1.0" Thick Flange

CUSTOMER _____ JOB NAME _____
P.O. NO. _____ ITEM NO. _____
S.O. NO. _____ SERIAL NO. _____
MOTOR MFR. _____ ENCL. _____ FRAME _____ H.P. _____ VOLTS _____ PH. _____ HZ. _____
PUMP TYPE & SIZE _____ RPM _____ G.P.M. _____ TOTAL HD. FT. _____
CERTIFIED FOR [] APPROVAL [] CONSTRUCTION BY _____ DATE _____
[] UL [] ULC LISTED TOTAL UNIT WEIGHT _____

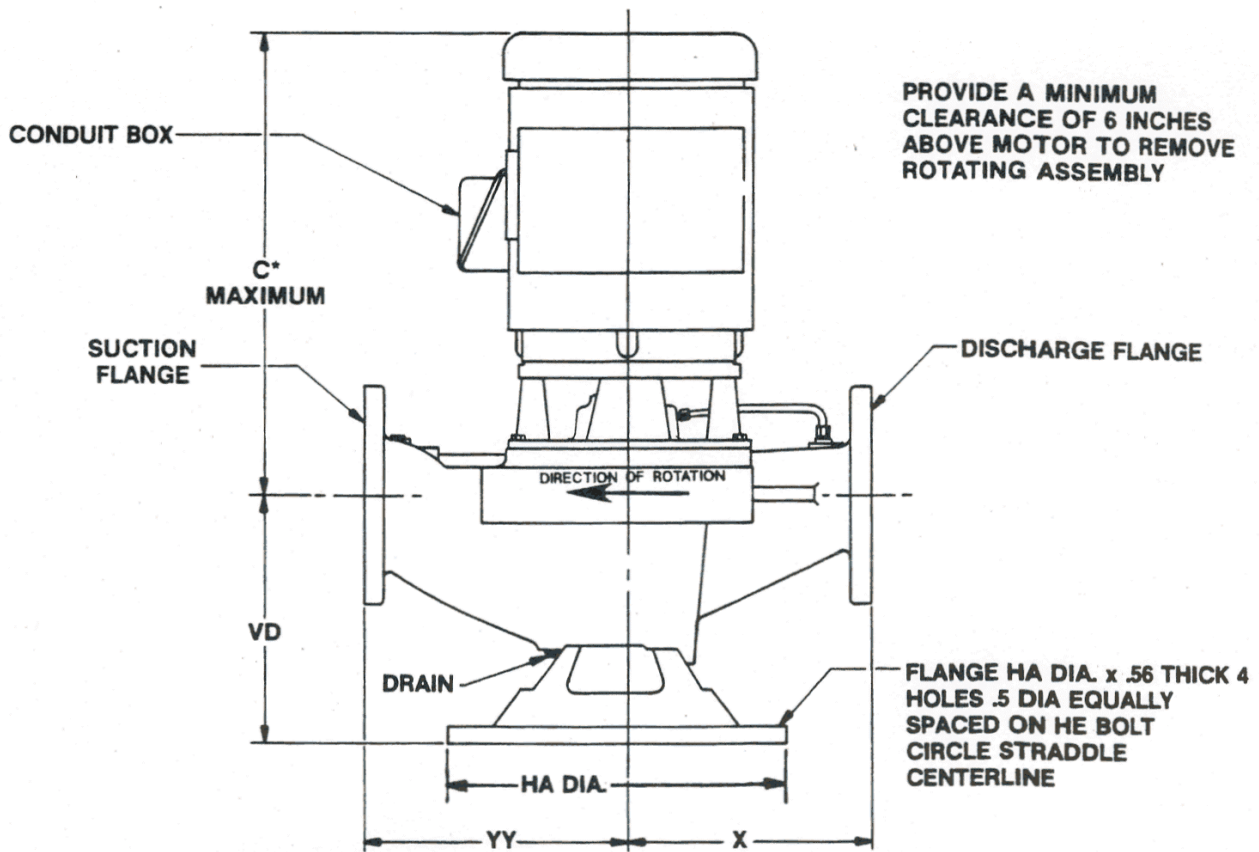
Subject to change without notice

DT4851437 Rev. 6-04

**INLINE FIRE PUMPS
ULC LISTED
(Mechanical Seal Type)
OUTLINE DIMENSIONS**



Peerless Pump Company
Indianapolis, IN 46207-7026



| √ | MODEL | DISCHARGE FLANGE SIZE x ANSI Lb RATING | SUCTION FLANGE SIZE x ANSI Lb RATING | PUMP DIMENSIONS IN INCHES | | | | | PUMP WEIGHT Lbs |
|---|----------|--|--------------------------------------|---------------------------|-------|-------|-------|-------|-----------------|
| | | | | HA | HE | VD | YY | X | |
| | 2.5PVFBM | 2.5 x 125 | 2.5 x 125 | 10 | 8.88 | 8.68 | 8.50 | 8.00 | 113 |
| | 3PVF8M | 3 x 125 | 3 x 125 | 10 | 8.88 | 8.94 | 9.50 | 8.50 | 139 |
| | 3PVF11M# | 3 x 125 | 3 x 125 | 10 | 8.88 | 8.81 | 10.88 | 11.38 | 165 |
| | 3PVF11M# | 3 x 250 | 3 x 125 | 10 | 8.88 | 8.81 | 10.88 | 11.38 | 170 |
| | 4PVF8GM | 4 x 125 | 4 x 125 | 11 | 9.88 | 9.56 | 11.00 | 10.00 | 175 |
| | SPVF7M | 5 x 125 | 5 x 125 | 11 | 9.88 | 10.00 | 11.00 | 9.50 | 150 |
| | 5PVF11M# | 5 x 125 | 5 x 125 | 11 | 9.88 | 9.81 | 11.62 | 11.62 | 180 |
| | 5PVF11M# | 5 x 250 | 5 x 125 | 11 | 9.88 | 9.81 | 11.62 | 11.62 | 180 |
| | 6PVF10M# | 6 x 250 | 6 x 125 | 11 | 9.50* | 14.00 | 16.00 | 14.00 | 400 |

| √ | MOTOR HP | 7.5 | 10 | 15 | 20 | 25 | 30 | 40 | 50 | 60 | 75 | 100 | 125 |
|---|-----------------------------|-----|-----|-----|-----|-----|-----|-----|-----|-----|-----|-----|-----|
| | ODP JPV MOTOR FRAME SIZE \$ | 184 | 213 | 215 | 254 | 256 | 284 | 286 | 324 | 326 | 364 | 365 | 404 |
| | C MAX (In Inches) * | 27 | 29 | 30 | 36 | 37 | 39 | 40 | 41 | 42 | 45 | 46 | 48 |
| | ODP MOTOR WEIGHT LBS. | 97 | 105 | 203 | 210 | 240 | 295 | 329 | | | 600 | | 850 |

*May be less with different make motors or enclosures.

284 JPV is the minimum motor size on these pumps

*0.88 Dia. 8 Holes, 1.0" Thick Flange

CUSTOMER _____ JOB NAME _____
P.O. NO. _____ ITEM NO. _____
S.O. NO. _____ SERIAL NO. _____
MOTOR MFR. _____ ENCL. _____ FRAME _____ H.P. _____ VOLTS _____ PH. _____ HZ. _____
PUMP TYPE & SIZE _____ RPM _____ G.P.M. _____ TOTAL HD. FT. _____
CERTIFIED FOR [] APPROVAL [] CONSTRUCTION BY _____ DATE _____
[] ULC LISTED TOTAL UNIT WEIGHT _____

Subject to change without notice

DT4851438 Rev. 6-04