



TYPICAL SPECIFICATION MTH Tool Co. Series T41, T51 Pumps

Contractor shall furnish and install a MTH Tool Co. Close-Coupled Series (T41) (T51) (Cast Iron Bronze Fitted) (All Bronze) Turbine Vane pump for a rated capacity of _____USGPM against a total head of _____feet (_____psi) with a motor rated at _____HP _____Volts _____Hz _____Phase (Open Drip Proof)(Totally Enclosed Fan Cooled) Enclosure which is built to NEMA (56C) (145TC)(182TZC) frame standards. Pump shall have a (cast iron) (bronze) motor bracket and discharge cover with registered fits to maintain axial alignment; bronze turbine vane impeller, (bronze shaft sleeve- 1/3 through 3 Hp. motors) (316 stainless steel motor shaft and impeller sleeve - 5 and 7-1/2 hp. motors), 1 inch suction and discharge connections to be of the threaded NPT type. Pump shall be designed for and equipped with mechanical seal. Pump shall be provided with casing relief valve per NFPA 20 (Paragraph 2-19.4). Pump to be wall or pad mounted per drawings.

TYPICAL SPECIFICATION MTH Tool Co. Series 150/160 Pumps

Contractor shall furnish and install a MTH Tool Co. Series (150) (160) flexible coupled bronze fitted Turbine Vane pump for a rated capacity of _____USGPM against a total head of _____feet (_____psi) with a motor rated at _____HP _____Volts _____Hz _____Phase (Open Drip Proof)(Totally Enclosed Fan Cooled) Enclosure with a steel non-drip rim channel base Wood's Sureflex flexible coupling, standard coupling guard.

Pump shall have (cast iron) (bronze) channel rings and cast iron end covers accurately aligned with AISI 416 stainless steel guide rods, end covers and bearing arms shall have registered fits to maintain axially alignment; bronze turbine vane impeller(s) shall be keyed to a AISI 416 stainless steel shaft; lip-sealed permanently lubricated ball bearings shall be furnished secured on shaft with bearing locknuts. The suction and discharge connection shall be of 2 inch and of the threaded NPT type. Pump shall be designed for and equipped with mechanical seals. Pump shall be provided with casing relief valve per NFPA 20 (Paragraph 2-19.4). Pump shall be pad mounted per drawings.

Pump and motor shall be carefully aligned and bolted in place on base prior to factory shipment. Final alignment must be checked and certified by equipment installer prior to initial operation.

Subject to change without notice.

**VERTICAL MULTISTAGE
DIFFUSER PUMPS
Type J Jockey
PUMP DATA**



Peerless Pump Company
Indianapolis, IN 46207-7026

Peerless Pump Standard

Motor: Standard Vertical, NEMA C Face Mount & Shaft Extension, Round Body, Footless Type.

Rotation: Clockwise when viewing pump from top of motor. Connections: 1-1/2 NPT Suction, 1-1/4 NPT Discharge. Stuffing Box: Mechanical Seal or Packed. Stuffing Box Vent: 1/4 In. NPT.

Casing Drain: 1/4 In. NPT.

Maximum Working Pressure: (2).

Maximum Temperature: (2).

Bearing Life: Minimum B-10 Bearing life exceeds two years. Maximum RPM: 3500.

Maximum Impeller Dia.: 4.438"-TMUB 4.344"-TMUAH.

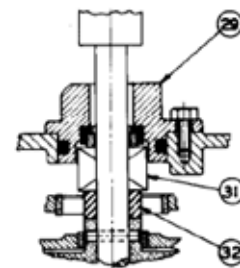
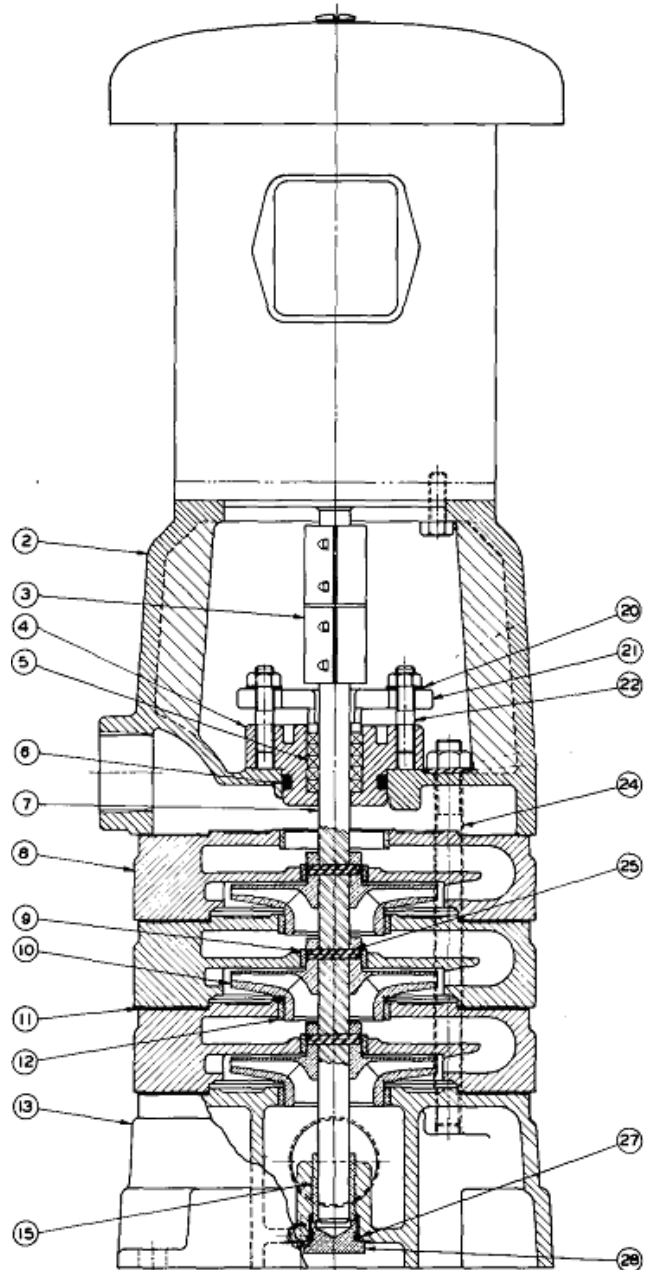
Eye Area Inch²: 1.47-TMUB 2.56-TMUAH

Sphere Size (Inch. Dia.): 0.156-TMUB 0.281-TMUAH

(2) Temperature and Working Pressure Limitations	
MECHANICAL SEAL	
TEMPERATURE °F	MAXIMUM WORKING PRESSURE PSI
0-180	200
180-225	150
226-250	50
PACKED	
0-230	200

Materials of Construction

ITEM NO.	PART DESCRIPTION	MATERIAL
2	Adapter	Cast Iron
3	Shaft Coupling	Steel
4	Stuffing Box	Cast Iron
5	Packing Set	Graphited Braided Fiber, Graphite Impregnated
6 & 27	"0" Rings	BUNA-N Rubber
7	Shaft	416 Stn. Steel
8	Diffuser	Cast Iron
9 & 12	Diffuser Rings	Bronze
10	Impeller	Bronze
11	Gasket	Fiber
13	Pump Base	Cast Iron
15	Base Bearing	Bronze
20	Gland Clamp	18-8 Stn. Steel
21	Packing Gland	Bronze
22	Gland Stud	Steel
24	Tie Stud	Steel
25	Drive Lock Pin	416 Stn. Steel
28	Base Plug	Brass
29	Mech. Seal Housing	Cast Iron
31	Mechanical Seal	EPT Bellows & Seat "0" Ring Carbon Washer Brass Metal Parts Ni-Resist Seat 18-8 Stn. Stl. Spring
32	Mechanical Seal Spacer	Brass



ALTERNATE MECHANICAL
SHAFT SEAL SUB-ASSEMBLY

Subject to change without notice.