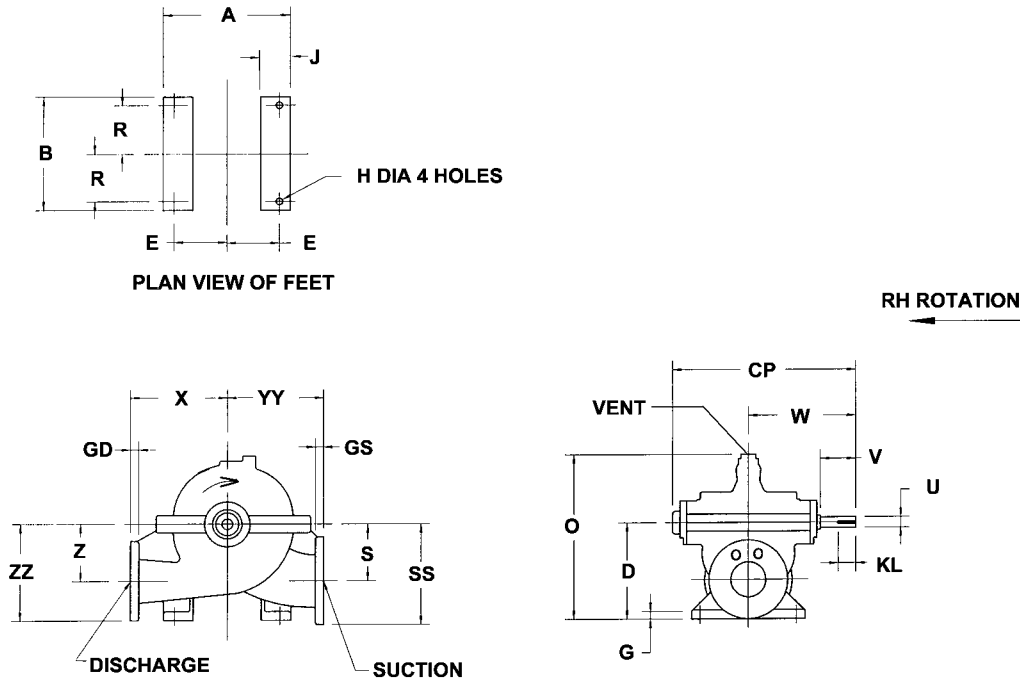




**HORIZONTAL SPLIT CASE SINGLE STAGE  
DOUBLE SUCTION  
Type BT**



✓	Pump Size & Type	Suction Flange Size x 125 ANSI Lb. Rating	Discharge Flange Size x 125 ANSI Lb. Rating	Pump Dimensions in Inches												
				A	AW	B	CP	D	E	G	GD	GS	H	J	KL	O
	2BT11	3	2	14.50	9.00	13.00	19.75	9.00	6.00	0.88	0.62	0.75	0.75	3.38	2.00	16.56
	4BT11, 4BT11G	5	4	14.50	9.00	13.00	19.75	11.00	6.00	0.88	0.94	0.94	0.75	3.38	2.00	19.25
	6BT11	6	6	14.50	9.00	13.00	19.75	13.00	6.00	0.88	1.00	1.00	0.75	3.38	2.00	21.38
	3BT9, 3BT9G	4	3	10.75	9.00	11.00	21.25	11.00	4.38	0.75	0.75	0.94	0.75	3.00	2.00	18.00
	4BT10, 4BT10G	5	4	14.50	9.00	13.00	21.25	11.00	6.00	1.00	0.94	0.94	0.75	3.38	2.00	18.88
	4BT12	5	4	14.50	9.00	13.00	21.25	13.00	6.00	1.00	0.94	0.94	0.75	3.38	2.00	21.62
	6BT14, 6BT14G	8	6	18.75	11.00	17.00	24.75	15.00	8.25	1.00	1.00	1.12	0.75	3.38	2.00	26.00
	8BT12	8	8	14.50	11.00	17.00	24.75	14.00	6.00	1.00	1.12	1.12	0.75	3.38	2.00	23.75
	8BT15, 8BT15G	10	8	18.00	11.50	19.00	26.38	16.00	7.50	1.12	1.12	1.19	0.88	3.38	3.00	28.00
	10BT12	10	10	18.75	12.88	17.00	29.12	17.00	8.25	1.00	1.19	1.19	0.75	3.38	3.00	26.80
	10BT14A, 10BT14J	12	10	22.00	15.00	22.00	34.00	18.00	9.50	1.12	1.19	1.25	1.00	4.00	4.00	29.50

✓	Pump Size & Type	Pump Dimensions in Inches											Keyway	Weight. Lb.
		R	S	SS	U +0.000 -0.001	V	W	X	YY	YX	Z	ZZ		
	2BT11	5.50	6.50	10.25	1.000	2.38	10.75	9.50	10.50	20.00	6.50	9.50	0.250 x 0.125	222
	4BT11, 4BT11G	5.50	6.50	11.50	1.000	2.38	10.75	10.00	12.00	22.00	6.50	11.00	0.250 x 0.125	260
	6BT11	5.50	6.50	12.00	1.000	2.38	10.75	10.50	12.44	22.94	6.50	12.00	0.250 x 0.125	275
	3BT9, 3BT9G	4.50	5.50	10.00	1.250	3.62	12.25	8.75	9.25	18.00	5.50	9.25	0.250 x 0.125	225
	4BT10, 4BT10G	5.50	6.50	11.50	1.250	3.62	12.25	11.00	11.00	22.00	6.50	11.00	0.250 x 0.125	270
	4BT12	5.50	6.50	11.50	1.250	3.62	12.25	10.25	12.50	22.75	7.75	12.25	0.250 x 0.125	300
	6BT14, 6BT14G	7.50	9.00	15.75	1.500	3.50	13.75	14.50	16.00	30.50	9.50	15.00	0.375 x 0.188	548
	8BT12	7.50	7.50	14.25	1.500	3.50	13.75	12.00	14.50	26.50	7.50	14.25	0.375 x 0.188	460
	8BT15, 8BT15G	8.25	9.00	17.00	1.750	4.00	14.88	16.00	17.69	33.69	10.00	16.75	0.375 x 0.188	760
	10BT12	7.50	9.50	17.50	1.750	4.00	16.25	15.50	16.50	32.00	9.50	17.50	0.375 x 0.188	800
	10BT14A, 10BT14J	9.50	11.00	20.50	2.125	4.88	19.00	15.00	18.75	33.75	11.00	19.00	0.500 x 0.250	1180

Customer \_\_\_\_\_ Job Name \_\_\_\_\_

P. O. No. \_\_\_\_\_ Item No. \_\_\_\_\_

Invoice No. \_\_\_\_\_ Serial No \_\_\_\_\_

Motor Mfr. \_\_\_\_\_ Enclosure \_\_\_\_\_ Frame \_\_\_\_\_ Hp \_\_\_\_\_ Volts \_\_\_\_\_ Ph \_\_\_\_\_ Hz \_\_\_\_\_

Pump Size & Type, Style \_\_\_\_\_ RPM \_\_\_\_\_ GPM \_\_\_\_\_ Total Hd in Ft \_\_\_\_\_

Certified for  Approval  Construction By \_\_\_\_\_ Date \_\_\_\_\_

*Subject to change unless certified for construction*

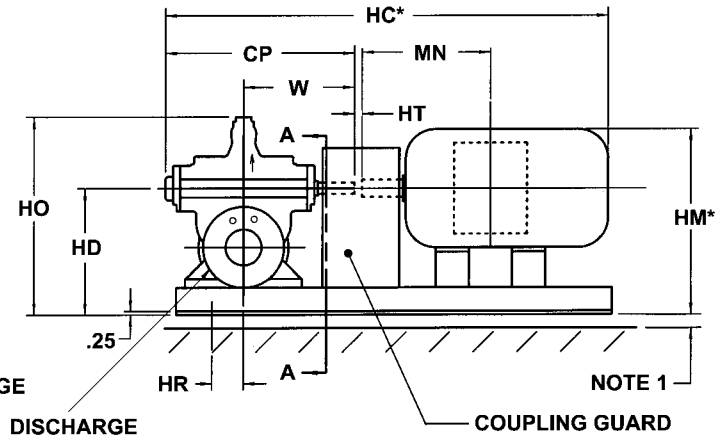
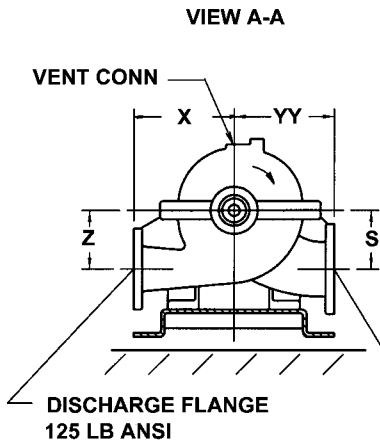
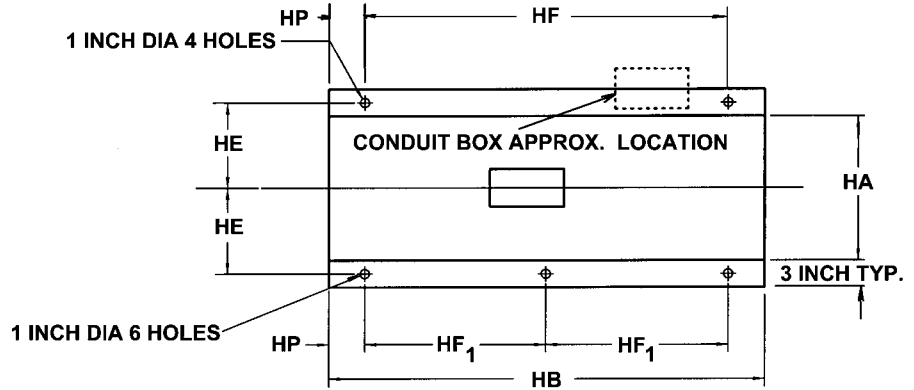
**DT 4853859**

**HORIZONTAL SPLIT CASE PUMPS  
 SINGLE STAGE DOUBLE SUCTION  
 Type BT Outline Dimensions  
 Fabricated Steel Base**



**Peerless Pump Company**  
 Indianapolis, IN 46207-7026

**Clockwise (RH) Rotation**  
 (When viewing unit from motor end)



- Non Drip Rim Base Furnished
- Drip Rim Base Furnished

Note 1: Customer must fill base with grout and allow for .75 to 1.50 inches of grout thickness between top of foundation and bottom of base.

Note 2: Unit installation and final coupling alignment must be done by the installer per Sterling Fluid Systems (USA), Inc. Installation Bulletin 2880549

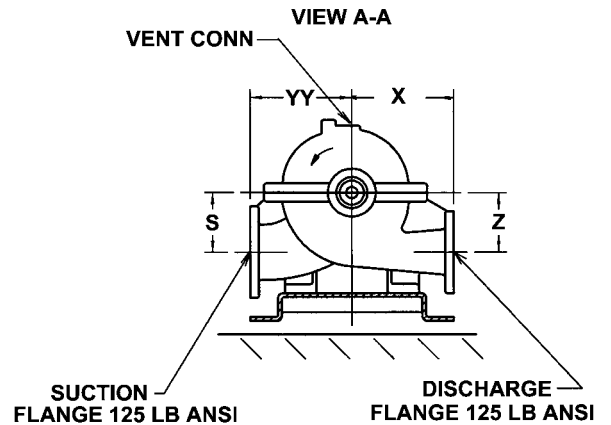
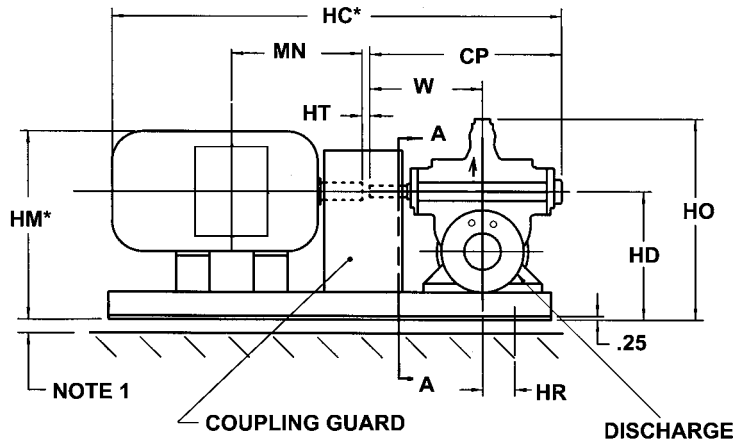
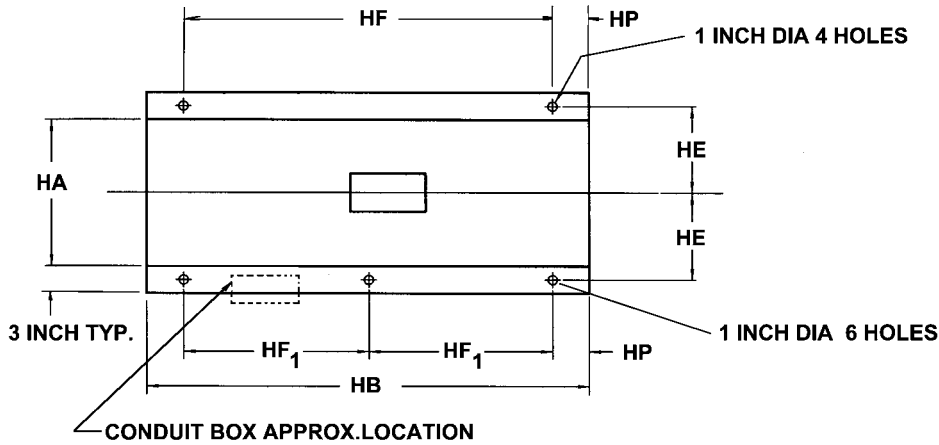
Customer \_\_\_\_\_ Job Name \_\_\_\_\_  
 P. O. No. \_\_\_\_\_ Item No. \_\_\_\_\_  
 Motor Mfr. \_\_\_\_\_ Enclosure \_\_\_\_\_ Frame \_\_\_\_\_ Hp \_\_\_\_\_ Volts \_\_\_\_\_ Ph. \_\_\_\_\_ Hz \_\_\_\_\_  
 Invoice No. \_\_\_\_\_ Serial No \_\_\_\_\_  
 Pump Size & Type \_\_\_\_\_ RPM \_\_\_\_\_ GPM \_\_\_\_\_ Total Head in Feet \_\_\_\_\_  
 Certified for  Approval  Construction By \_\_\_\_\_ Date \_\_\_\_\_

Subject to change unless certified for construction



**HORIZONTAL SPLIT CASE PUMPS  
SINGLE STAGE DOUBLE SUCTION  
Type BT Outline Dimensions  
Fabricated Steel Base**

**Counter-Clockwise (LH) Rotation  
(When viewing unit from motor end)**



Non Drip Rim Base Furnished

Drip Rim Base Furnished

Note 1: Customer must fill base with grout and allow for .75 to 1.50 inches of grout thickness between top of foundation and bottom of base.

Note 2: Unit installation and final coupling alignment must be done by the installer per Sterling Fluid Systems (USA), Inc. Installation Bulletin 2880549

Customer \_\_\_\_\_ Job Name \_\_\_\_\_  
P. O. No. \_\_\_\_\_ Item No. \_\_\_\_\_  
Motor Mfr. \_\_\_\_\_ Enclosure \_\_\_\_\_ Frame \_\_\_\_\_ Hp \_\_\_\_\_ Volts \_\_\_\_\_ Ph. \_\_\_\_\_ Hz \_\_\_\_\_  
Invoice No. \_\_\_\_\_ Serial No. \_\_\_\_\_  
Pump Size & Type \_\_\_\_\_ RPM \_\_\_\_\_ GPM \_\_\_\_\_ Total Head in Feet \_\_\_\_\_  
Certified for  Approval  Construction By \_\_\_\_\_ Date \_\_\_\_\_  
*Subject to change unless certified for construction*

**HORIZONTAL SPLIT CASE PUMPS  
SINGLE STAGE DOUBLE SUCTION  
Type BT**



Peerless Pump Company  
Indianapolis, IN 46207-7026

**Type BT Unit Outline Dimensions Fabricated Steel Base**

✓ Pump Size & Type	Suction Flange Size x ANSI Lb.		Discharge Flange Size x ANSI Lb.		Pump Dimensions in Inches							Pump Weight in Lb.	
	Rating	3 X 125	Rating	2 X 125	CP	S	W	X	YY	Z	Motor	Base	Total Unit
2BT11	3 X 125		2 X 125		20.75	6.5	10.75	9.50	10.5	6.5			222
3BT9	4 X 125		3 X 125		21.25	5.5	12.25	8.75	9.25	5.5			225
3BT9G	4 X 125		3 X 125		21.25	5.5	12.25	8.75	9.25	5.5			225

✓ Pump Size & Type	Unit Dimensions In Inches										Base Dimensions In Inches						Weight-Lbs.			
	C*	DM	HC*	HD	HM*	HO	HR	HT	HX	MN	HA	HB	HE	HF	HF1	HP	Cplg.	Motor	Base	Total Unit
2BT11	16	4.50	37.00	12.50	17.00	20.25	3.5	0.25	6.50	7.75	16	48	9.5	40	-	4	8	72	145	447
2BT11	17	4.50	38.00	12.50	17.00	20.25	3.5	0.25	6.50	8.25	16	48	9.5	40	-	4	8	80	145	455
2BT11	19	5.25	40.00	12.25	18.00	20.00	3.5	0.25	6.50	9.62	16	48	9.5	40	-	4	8	130	145	505
2BT11	21	5.25	42.00	12.25	18.00	20.00	3.5	0.25	6.50	10.38	16	48	9.5	40	-	4	8	145	145	520
2BT11	24	6.25	45.00	12.25	19.00	20.00	3.5	0.25	6.50	12.38	16	48	9.5	40	-	4	8	220	145	595
2BT11	26	6.25	47.00	12.25	19.00	20.00	3.5	0.25	6.50	13.25	16	48	9.5	40	-	4	8	240	145	615
3BT9, 3BT9G	16	4.50	37.50	14.50	19.00	21.50	3.0	0.25	6.00	7.75	16	48	9.5	40	-	4	6	75	115	421
3BT9, 3BT9G	17	4.50	38.50	14.50	19.00	21.50	3.0	0.25	6.00	8.25	16	48	9.5	40	-	4	6	80	115	426
3BT9, 3BT9G	19	5.25	40.50	14.25	20.00	21.25	3.0	0.25	6.00	9.62	16	48	9.5	40	-	4	6	130	115	476
3BT9, 3BT9G	21	5.25	42.50	14.25	20.00	21.25	3.0	0.25	6.00	10.38	16	48	9.5	40	-	4	6	145	115	491
3BT9, 3BT9G	24	6.25	45.50	14.25	21.50	21.25	3.0	0.25	6.00	12.38	16	48	9.5	40	-	4	8	220	115	568
3BT9, 3BT9G	26	6.25	47.50	14.25	21.50	21.25	3.0	0.25	6.00	13.25	16	48	9.5	40	-	4	8	240	115	588

\* Maximum dimensions, may be less with different make motors or enclosures



**HORIZONTAL SPLIT CASE PUMPS  
SINGLE STAGE DOUBLE SUCTION  
Type BT**

**Type BT Unit Outline Dimensions Fabricated Steel Base**

✓ Pump Size & Type	Suction Flange Size x ANSI Lb. Rating	Discharge Flange Size x ANSI Lb. Rating	Pump Dimensions in Inches						Pump Weight in Lb.				
			CP	S	W	X	YY	Z	Motor	Cplg.	HP	Total Unit	
4BT10	5 X 125	4 X 125	21.25	6.5	12.25	11.00	11.0	6.50	270				
4BT10G	5 X 125	4 X 125	21.25	6.5	12.25	11.00	11.0	6.50	270				
4BT11	5 X 125	4 X 125	20.75	6.5	10.75	10.00	12.0	6.50	260				
4BT11G	5 X 125	4 X 125	20.75	6.5	10.75	10.00	12.0	6.50	260				
4BT12	5 X 125	4 X 125	21.25	6.5	12.25	10.25	12.5	7.75	300				

✓ Pump Size & Type	Motor Frame Size	Unit Dimensions in Inches										Base Dimensions in Inches						Weight-Lb.			
		C*	DM	HC*	HD	HM*	HO	HR	HT	HX	MN	HA	HB	HE	HF	HF1	HP	Motor	Cplg.	Base	Total Unit
4BT10,4BT10G	182T	16	4.50	37.50	14.50	19.00	21.38	3.5	0.25	5.50	7.75	16	48	9.5	40		4	72	8	130	480
4BT10, 4BT10G	184T	17	4.50	38.50	14.50	19.00	21.38	3.5	0.25	5.50	8.25	16	48	9.5	40		4	80	8	130	488
4BT10,4BT10G	213T	19	5.25	40.50	14.25	20.00	21.12	3.5	0.25	5.50	9.62	16	48	9.5	40	-	4	130	8	130	538
4BT10, 4BT10G	215T	21	5.25	42.50	14.25	20.00	21.12	3.5	0.25	5.50	10.38	16	48	9.5	40	-	4	145	8	130	553
4BT10, 4BT10G	254T	24	6.25	45.50	14.25	20.75	21.12	3.5	0.25	5.50	12.38	16	48	9.5	40	-	4	220	8	130	628
4BT10, 4BT10G	256T	26	6.25	47.50	14.25	20.75	21.12	3.5	0.25	5.50	13.25	16	48	9.5	40	-	4	240	8	130	648
4BT11, 4BT11G	215T	21	5.25	42.00	14.25	20.25	22.50	3.5	0.25	6.50	10.38	16	48	9.5	40	-	4	180	8	145	593
4BT11, 4BT11G	254T	24	6.25	45.00	14.25	21.00	22.50	3.5	0.25	6.50	12.38	16	48	9.5	40	-	4	220	8	145	633
4BT11, 4BT11G	256T	26	6.25	47.00	14.25	21.00	22.50	3.5	0.25	6.50	13.25	16	48	9.5	40	-	4	240	8	145	653
4BT11, 4BT11G	284T	27	7.00	48.00	14.00	21.00	22.25	3.5	0.25	6.50	14.12	16	48	9.5	40	-	4	330	12	145	747
4BT11, 4BT11G	286T	28	7.00	49.00	14.00	21.00	22.25	3.5	0.25	6.50	14.88	16	48	9.5	40	-	4	370	12	145	787
4BT11, 4BT11G	324T	30	8.00	51.00	14.00	22.50	22.25	3.5	0.25	6.50	15.75	16	48	9.5	40	-	4	475	15	145	895
4BT11, 4BT11G	324TS	29	8.00	50.00	14.00	22.50	22.25	3.5	0.25	6.50	14.25	16	48	9.5	40	-	4	475	15	145	895
4BT12	254T	24	6.25	45.50	16.25	22.50	25.00	3.5	0.25	5.50	12.38	16	48	9.5	40	-	4	220	8	145	673
4BT12	256T	26	6.25	47.50	16.25	22.50	25.00	3.5	0.25	5.50	13.25	16	48	9.5	40	-	4	240	8	145	693
4BT12	284T	27	7.00	48.50	16.00	23.50	24.75	3.5	0.25	5.50	14.12	16	48	9.5	40	-	4	330	12	145	787
4BT12	286T	28	7.00	49.50	16.00	23.50	24.75	3.5	0.25	5.50	14.88	16	48	9.5	40	-	4	370	15	145	830

\* Maximum dimensions, may be less with different make motors or enclosures

**HORIZONTAL SPLIT CASE PUMPS  
SINGLE STAGE DOUBLE SUCTION  
Type BT**



Peerless Pump Company  
Indianapolis, IN 46207-7026

**Type BT Unit Outline Dimensions Fabricated Steel Base**

✓	Pump Size & Type	Suction Flange Size x ANSI Lb.		Discharge Flange Size x ANSI Lb.		Pump Dimensions in Inches						Pump Weight in Lb.										
		Rating	6 X 125	Rating	6 X 125	CP	S	W	X	YY	Z	Motor	Cplg.	Base	Total Unit							
	6BT11	6 X 125	6 X 125	6 X 125	6 X 125	20.75	6.5	10.75	10.5	12.44	6.5	275										
	6BT14	8 X 125	8 X 125	8 X 125	8 X 125	24.75	9.00	13.75	14.5	16.0	9.50	550										
	6BT14G	8 X 125	8 X 125	6 X 125	6 X 125	24.75	9.00	13.75	14.5	16.0	9.50	550										
✓	Pump Size & Type	Motor Frame Size	C*	DM	HC*	HD	HM*	HO	HR	HT	HX	MN	HA	HB	HE	HF	HF1	HP	Cplg.	Motor	Base	Total Unit
	6BT11	213T	19	5.25	40.00	16.25	22.00	24.62	3.5	0.25	6.50	9.62	16	48	9.5	40	-	4	6	130	145	556
	6BT11	215T	21	5.25	42.00	16.25	22.00	24.62	3.5	0.25	6.50	10.38	16	48	9.5	40	-	4	6	145	145	571
	6BT11	254T	24	6.25	45.00	16.25	23.00	24.62	3.5	0.25	6.50	12.38	16	48	9.5	40	-	4	8	220	145	648
	6BT11	256T	26	6.25	47.00	16.25	23.00	24.62	3.5	0.25	6.50	13.25	16	48	9.5	40	-	4	8	240	145	668
	6BT11	284T	27	7.00	48.00	16.00	23.00	24.38	3.5	0.25	6.50	14.12	16	48	9.5	40	-	4	12	330	145	762
	6BT11	286T	28	7.00	49.00	16.00	23.00	24.38	3.5	0.25	6.50	14.88	16	48	9.5	40	-	4	15	370	145	805
	6BT11	324T	30	8.00	51.00	16.00	24.00	24.38	3.5	0.25	6.50	15.75	18	48	10.5	40	-	4	15	475	145	910
	6BT11	324TS	29	8.00	50.00	16.00	24.00	24.38	3.5	0.25	6.50	14.25	18	48	10.5	40	-	4	15	475	145	910
	6BT11	326T	32	8.00	53.25	16.00	24.00	24.38	3.5	0.50	6.50	16.50	18	48	10.5	40	-	4	15	525	145	960
	6BT14G	254T	24	6.25	49.00	18.25	24.75	29.25	6.0	0.25	5.00	12.38	23	60	13.0	-	24	6	8	220	210	988.
	6BT14G	256T	26	6.25	51.00	18.25	24.75	29.25	6.0	0.25	5.00	13.25	23	60	13.0	-	24	6	8	240	210	1008
	6BT14G	284T	27	7.00	52.00	18.00	25.50	29.00	6.0	0.25	5.00	14.12	23	60	13.0	-	24	6	12	330	210	1102
	6BT14G	286T	28	7.00	53.00	18.00	25.50	29.00	6.0	0.25	5.00	14.88	23	60	13.0	-	24	6	15	370	210	1145
	6BT14G	324T	30	8.00	55.00	18.00	26.50	29.00	6.0	0.25	5.00	15.75	23	60	13.0	-	24	6	15	475	210	1250
	6BT14G	324TS	29	8.00	54.00	18.00	26.50	29.00	6.0	0.25	5.00	14.25	23	60	13.0	-	24	6	15	475	210	1250
	6BT14G	326T	32	8.00	57.00	18.00	26.50	29.00	6.0	0.25	5.00	16.50	23	60	13.0	-	24	6	15	525	210	1300
	6BT14G	364TS	31	9.00	56.75	18.00	27.50	29.00	6.0	1.00	5.00	15.25	23	60	13.0	-	24	6	16	630	210	1406
	6BT14G	364T	34	9.00	59.00	18.00	27.50	29.00	6.0	0.25	5.00	17.38	23	60	13.0	-	24	6	16	630	210	1406
	6BT14G	365TS	32	9.00	57.75	18.00	27.50	29.00	6.0	1.00	5.00	15.75	23	60	13.0	-	24	6	16	690	210	1466
	6BT14G	365T	35	9.00	60.00	18.00	27.50	29.00	6.0	0.25	5.00	17.88	23	60	13.0	-	24	6	16	690	210	1466
	6BT14G	404T	38	10.00	63.25	18.00	28.50	29.00	6.0	0.50	5.00	20.00	23	60	13.0	-	24	6	67	830	210	1657
	6BT14G	404TS	35	10.00	60.00	18.00	28.50	29.00	6.0	0.25	5.00	17.00	23	60	13.0	-	24	6	16	830	210	1606
	6BT14G	405T	39	10.00	65.50	19.00	28.50	29.00	6.0	1.75	5.00	20.75	24	72	13.5	-	30	6	67	915	315	1847
	6BT14G	405TS	37	10.00	62.00	18.00	28.50	29.00	6.0	0.25	5.00	17.75	23	60	13.0	-	24	6	23	915	210	1698
	6BT14G	444T	44	11.00	69.38	19.00	30.00	30.00	6.0	0.62	5.00	23.25	24	72	13.5	-	30	6	99	1100	315	2064
	6BT14G	444TS	41	11.00	66.00	18.00	30.00	29.00	6.0	0.25	5.00	19.50	23	60	13.0	-	24	6	39	1100	210	1899
	6BT14G	445T	46	11.00	71.38	19.00	30.00	30.00	6.0	0.62	5.00	24.25	24	72	13.5	-	30	6	153	1270	315	2288

\* Maximum dimensions, may be less with different make motors or enclosures



**HORIZONTAL SPLIT CASE PUMPS  
SINGLE STAGE DOUBLE SUCTION  
Type BT**

**Type BT Unit Outline Dimensions Fabricated Steel Base**

Pump Size & Type	Suction Flange Size x ANSI Lb.		Discharge Flange Size x ANSI Lb.		Pump Dimensions in Inches							Pump Weight in Lb.									
	Rating	8 x 125	Rating	8 x 125	CP	S	W	X	YY	Z	Cplg.	Motor	Base	Total Unit							
8BT12	8 x 125	8 x 125	8 x 125	8 x 125	24.75	7.5	13.75	12.0	14.50	7.5	10	220	145	835							
8BT15	10 x 125	8 x 125	8 x 125	8 x 125	26.38	9.0	14.88	16.0	17.69	10.0	10	240	145	855							
8BT15G	10 x 125	8 x 125	8 x 125	8 x 125	26.38	9.0	14.88	16.0	17.69	10.0	12	330	190	992							
8BT12	254T	24	6.25	49.00	17.25	23.75	27.00	5.50	0.25	5.50	12.38	16	48	9.5	40	4	10	220	145	835	
8BT12	256T	26	6.25	51.00	17.25	23.75	27.00	5.50	0.25	5.50	13.25	16	48	9.5	40	4	10	240	145	855	
8BT12	284T	27	7.00	52.00	17.00	24.50	26.75	4.00	0.25	7.00	14.12	18	60	10.5	-	24	6	12	330	190	992
8BT12	286T	28	7.00	53.00	17.00	24.50	26.75	4.00	0.25	7.00	14.88	18	60	10.5	-	24	6	12	370	190	1032
8BT12	324T	30	8.00	55.00	17.00	25.50	26.75	4.00	0.25	7.00	15.75	18	60	10.5	-	24	6	15	475	190	1140
8BT12	324TS	29	8.00	54.00	17.00	25.50	26.75	4.00	0.25	7.00	14.25	18	60	10.5	-	24	6	15	475	190	1140
8BT12	326T	32	8.00	57.00	17.00	25.50	26.75	4.00	0.25	7.00	16.50	18	60	10.5	-	24	6	15	525	190	1190
8BT12	364T	34	9.00	59.88	17.00	26.50	26.75	4.00	1.12	7.00	17.38	18	60	10.5	-	24	6	40	560	190	1250
8BT12	364TS	31	9.00	56.75	17.00	26.50	26.75	4.00	1.00	7.00	15.25	18	60	10.5	-	24	6	16	630	190	1296
8BT12	365T	35	9.00	60.88	17.00	26.50	26.75	4.00	1.12	7.00	17.88	18	60	10.5	-	24	6	40	650	190	1340
8BT12	365TS	32	9.00	57.75	17.00	26.50	26.75	4.00	1.00	7.00	15.75	18	60	10.5	-	24	6	16	690	190	1356
8BT12	404T	38	10.00	64.00	19.00	29.50	28.75	4.00	1.25	7.00	20.00	23	60	13.0	-	30	6	67	812	210	1549
8BT12	404TS	35	10.00	60.00	19.00	29.50	28.75	4.00	0.25	7.00	17.00	23	60	13.0	-	24	6	23	830	210	1523
8BT12	405T	39	10.00	65.00	19.00	29.50	28.75	4.00	1.25	7.00	20.75	23	60	13.0	-	30	6	67	962	210	1699
8BT12	405TS	37	10.00	62.00	19.00	29.50	28.75	4.00	0.25	7.00	17.75	23	60	13.0	-	24	6	23	915	210	1608
8BT15G	326T	32	8.00	58.88	19.00	27.00	31.00	4.75	.50	6.75	16.50	23	60	13.0	-	24	6	12	525	210	1507
8BT15G	364TS	32	9.00	58.88	19.00	28.19	31.00	4.75	.50	6.75	15.25	23	60	13.0	-	24	6	16	630	210	1616
8BT15G	365TS	32	9.00	58.88	19.00	28.19	31.00	4.75	.50	6.75	15.75	23	60	13.0	-	24	6	16	690	210	1676
8BT15G	364T	34	9.00	60.88	19.00	28.19	31.00	4.75	.50	6.75	17.38	23	60	13.0	-	24	6	16	630	210	1616
8BT15G	365T	35	9.00	61.88	19.00	29.19	31.00	4.75	.50	6.75	17.88	23	60	13.0	-	24	6	16	690	210	1676
8BT15G	404T	38	10.00	64.88	20.00	30.75	31.00	4.75	.50	6.75	20.00	24	72	13.5	-	30	6	39	830	315	1944
8BT15G	404TS	35	10.00	62.88	19.00	29.19	31.00	4.75	1.50	6.75	17.00	23	60	13.0	-	24	6	16	830	210	1816
8BT15G	405TS	37	10.00	63.88	19.00	30.19	31.00	4.75	.50	6.75	17.75	23	60	13.0	-	24	6	23	915	210	1908
8BT15G	444T	44	11.00	70.88	20.00	30.75	32.00	4.75	.50	6.75	23.25	24	72	13.5	-	30	6	39	1100	315	2214
8BT15G	444TS	41	11.00	67.88	20.00	30.75	31.00	4.75	.50	6.75	19.50	24	72	13.5	-	30	6	39	1100	315	2214
8BT15G	445TS	43	11.00	69.88	20.00	30.75	31.00	4.75	.50	6.75	20.50	24	72	13.5	-	30	6	39	1270	315	2384

\* Maximum dimensions, may be less with different make motors or enclosures

**HORIZONTAL SPLIT CASE PUMPS  
SINGLE STAGE DOUBLE SUCTION**



Peerless Pump Company  
Indianapolis, IN 46207-7026

**Type BT**

**Type BT Unit Outline Dimensions Fabricated Steel Base**

Pump Size & Type	Suction Flange Size x ANSI Lb.		Discharge Flange Size x ANSI Lb.		Pump Dimensions in Inches							Pump Weight in Lbs.										
	Rating		Rating		CP	S	W	X	YY	Z	Lbs.	HP	Cplg.	Motor	Base	Total Unit						
	10 x 125	12 x 125	10 x 125	12 x 125													29.12	9.5	16.25	15.5	16.50	9.5
10BT12	10 x 125	12 x 125	10 x 125	12 x 125	29.12	9.5	16.25	15.5	16.50	9.5	800											
10BT14A	10 x 125	12 x 125	10 x 125	12 x 125	34.00	11.0	19.00	15.0	18.75	11.0	1180											
10BT14J	10 x 125	12 x 125	10 x 125	12 x 125	34.00	11.0	19.00	15.0	18.75	11.0	1180											
Pump Size & Type	Motor Frame Size	Unit Dimensions in Inches										Base Dimensions in Inches							Weight-Lbs.			
		C*	DM	HC*	HD	HM*	HO	HR	HT	HX	MN	HA	HB	HE	HF	HF1	HP	Cplg.	Motor	Base	Total Unit	
10BT12	254T	24	6.25	53.38	20.25	27.0	30.05	4.0	0.25	8.88	12.38	23	60	13.0	-	24	6	10	220	210	1240	
10BT12	256T	26	6.25	55.38	20.25	27.0	30.05	4.0	0.25	8.88	13.25	23	60	13.0	-	24	6	10	220	210	1240	
10BT12	284T	27	7.00	56.38	20.00	27.5	29.80	4.0	0.25	8.88	14.12	23	60	13.0	-	24	6	12	330	210	1352	
10BT12	286T	28	7.00	57.38	20.00	27.5	29.80	4.0	0.25	8.88	14.88	23	60	13.0	-	24	6	12	370	210	1392	
10BT12	324T	30	8.00	59.38	20.00	28.5	29.80	4.0	0.25	8.88	15.75	23	60	13.0	-	24	6	15	475	210	1500	
10BT12	326T	32	8.00	61.38	20.00	28.5	29.80	4.0	0.25	8.88	16.50	23	60	13.0	-	24	6	15	525	210	1550	
10BT12	364TS	31	9.00	60.38	20.00	29.5	29.80	4.0	0.25	8.88	15.25	23	60	13.0	-	24	6	16	630	210	1656	
10BT12	365TS	32	9.00	61.38	20.00	29.5	29.80	4.0	0.25	8.88	15.75	23	60	13.0	-	24	6	16	690	210	1716	
10BT12	404T	38	10.00	67.38	20.00	30.5	29.80	4.0	0.25	8.88	20.00	23	60	13.0	-	24	6	67	830	210	1907	
10BT12	404TS	35	10.00	64.38	20.00	30.5	29.80	4.0	0.25	8.88	17.00	23	60	13.0	-	24	6	23	830	210	1863	
10BT12	405T	39	10.00	68.38	21.00	31.5	30.80	4.0	0.25	8.88	20.75	24	72	13.5	-	30	6	67	915	315	2097	
10BT12	405TS	37	10.00	66.38	20.00	30.5	29.80	4.0	0.25	8.88	17.75	23	60	13.0	-	24	6	39	915	210	1964	
10BT12	444T	44	11.00	73.38	21.00	33.0	30.80	4.0	0.25	8.88	23.25	24	72	13.5	-	30	6	99	1100	315	2314	
10BT12	444TS	41	11.00	70.38	20.00	32.0	29.80	4.0	0.25	8.88	19.50	23	60	13.0	-	24	6	39	1100	210	2149	
10BT12	445T	46	11.00	76.25	21.00	33.0	30.80	4.0	1.12	8.88	24.25	24	72	13.5	-	30	6	153	1270	315	2538	
10BT12	445TS	43	11.00	72.38	21.00	33.0	30.80	4.0	0.25	8.88	20.50	24	72	13.5	-	30	6	39	1270	315	2424	
10BT14A, 10BT14J	286T	28	7.00	62.25	22.00	29.5	33.50	7.0	0.25	8.00	14.88	24	72	13.5	-	30	6	15	370	315	1880	
10BT14A, 10BT14J	324T	30	8.00	64.25	22.00	30.5	33.50	7.0	0.25	8.00	15.75	24	72	13.5	-	30	6	15	475	315	1985	
10BT14A, 10BT14J	326T	32	8.00	66.25	22.00	30.5	33.50	7.0	0.25	8.00	16.50	24	72	13.5	-	30	6	15	525	315	2035	
10BT14A, 10BT14J	364TS	31	9.00	65.25	22.00	32.0	33.50	7.0	0.25	8.00	15.25	24	72	13.5	-	30	6	16	630	315	2141	
10BT14A, 10BT14J	365TS	32	9.00	66.25	22.00	32.0	33.50	7.0	0.25	8.00	15.75	24	72	13.5	-	30	6	16	690	315	2201	
10BT14A, 10BT14J	364T	34	9.00	68.25	22.00	32.0	33.50	7.0	0.25	8.00	17.38	24	72	13.5	-	30	6	16	630	315	2141	
10BT14A, 10BT14J	365T	35	9.00	69.25	22.00	32.0	33.50	7.0	0.25	8.00	17.88	24	72	13.5	-	30	6	16	690	315	2201	
10BT14A, 10BT14J	404TS	35	10.00	69.25	22.00	33.0	33.50	7.0	0.25	8.00	17.00	24	72	13.5	-	30	6	23	830	315	2348	
10BT14A, 10BT14J	405TS	37	10.00	71.25	22.00	33.0	33.50	7.0	0.25	8.00	17.75	24	72	13.5	-	30	6	23	915	315	2433	
10BT14A, 10BT14J	404T	38	10.00	72.25	22.00	33.0	33.50	7.0	0.25	8.00	20.00	24	72	13.5	-	30	6	39	830	315	2364	
10BT14A, 10BT14J	405T	39	10.00	73.25	22.00	33.0	33.50	7.0	0.25	8.00	20.75	24	72	13.5	-	30	6	39	915	370	2504	
10BT14A, 10BT14J	444T	44	11.00	78.25	22.00	34.0	33.50	7.0	0.25	8.00	23.25	24	84	13.5	-	36	6	99	1095	315	2689	
10BT14A, 10BT14J	444TS	41	11.00	75.25	22.00	34.0	33.50	7.0	0.25	8.00	19.50	24	72	13.5	-	30	6	39	1095	315	2629	
10BT14A, 10BT14J	445T	46	11.00	80.25	23.00	35.0	34.50	7.0	0.25	8.00	24.25	24	84	13.5	-	36	6	50	1270	370	2870	
10BT14A, 10BT14J	445TS	43	11.00	77.25	22.00	34.0	33.50	7.0	0.25	8.00	20.50	24	72	13.5	-	30	6	39	1270	315	2804	

\* Maximum dimensions, may be less with different make motors or enclosures