



**PUMP STANDARDS F and C Units:** Clockwise rotation when viewing pump discharge connection mounted in top vertical position. Cast Iron Bronze Fitted or All Iron (not all sizes) Construction. JP Style stuffing box with 3/8 in. square graphited packing, or, JM Style stuffing box with mechanical seal. **F Units:** Grease lubricated bearings minimum L10 bearing life exceeds 2 years at maximum load. Base mounted: Flexible coupling with elastomer type insert or sleeve, standard coupling guard, steel non-drip rim base with optional drip pan or drip rim. ①

Pump Size	Max. Imp. Dia.	Min. Imp. Dia.	Max. Sphere Size	No. of Imp Vanes	Imp. Eye Area Sq. In.	Pump Suction Size ②	Pump Discharge Size ③
610A	6.0	4.0	.38	3	3.20	2.0 NPT	1.0 NPT
615A	6.0	4.0	.38	5	3.50	2.0 NPT	1.5 NPT
615J	6.0	4.0	.38	3	5.20	2.0 NPT	1.5 NPT
620A	6.0	4.0	.38	5	3.10	2.5 NPT	2.0 NPT
740	7.0	5.5	.65	6	12.9	5.0 FLG	4.0 FLG
810A	8.0	6.0	.31	6	3.10	2.0 NPT	1.0 NPT
810G	8.0	6.0	.21	6	3.10	2.0 NPT	1.0 NPT
815A	8.0	6.0	.31	6	3.10	2.0 NPT	1.5 NPT
815G	8.0	6.0	.21	6	3.10	2.0 NPT	1.5 NPT
820A	8.0	6.0	.25	8	4.90	2.5 NPT	2.0 NPT
825A	8.0	6.0	.50	6	6.50	3.0 FLG	2.5 FLG
830A	8.0	6.0	.62	6	9.10	4.0 FLG	3.0 FLG
840	8.0	6.0	.87	5	14.00	5.0 FLG	4.0 FLG
1020A	10.0	7.0	.25	6	3.90	2.5 FLG	2.0 FLG
1025A	10.0	7.0	.50	6	7.10	3.0 FLG	2.5 FLG
1030A	10.0	7.0	.62	6	9.60	4.0 FLG	3.0 FLG
1040A	10.0	7.0	.94	6	12.60	5.0 FLG	4.0 FLG
1050A	10.0	7.0	1.13	6	20.75	6.0 FLG	5.0 FLG
1125	10.5	8.0	.38	5	6.80	3.0 FLG	2.5 FLG
1140	10.5	8.0	.40	5	12.01	5.0 FLG	4.0 FLG
1215	12.0	9.0	.38	6	3.10	2.0 NPT	1.5 NPT
1220	12.0	9.0	.38	8	4.90	2.5 FLG	2.0 FLG
1230	12.0	9.0	.62	8	10.40	4.0 FLG	3.0 FLG
1240	12.0	9.0	.81	6	15.10	5.0 FLG	4.0 FLG
1250	12.0	9.0	1.00	6	18.10	6.0 FLG	5.0 FLG
1260A	12.0	9.0	1.12	8	50.00	8.0 FLG	6.0 FLG
1260G	12.0	9.0	.80	7	30.20	8.0 FLG	6.0 FLG
1425	14.0	10.0	.40	6	11.30	4.0 FLG	2.5 FLG
1430	14.0	10.0	.54	6	11.30	4.0 FLG	3.0 FLG
1430G	14.0	10.0	.40	6	11.30	4.0 FLG	3.0 FLG
1440	14.0	10.0	.72	6	16.90	5.0 FLG	4.0 FLG
1660	16.0	11.5	.75	8	32.00	8.0 FLG	6.0 FLG

Pump Series or Type	Temperature ° F	Maximum Working Pressure Psi
C & F—M,	0 - 150	175 (250 ②)
C & F—P and	151 - 200	165 (230 ②)
PE203 through PE838 ⑥	201 - 250	155 (215 ②)
PE33B, 50B, 75C, 100C, 150C	0 - 160	75

⑥ Maximum suction pressure is 100 psi.

② 1125 and 1140 with 250 Lb ANSI Discharge Flange only.

**Model Designation.**

Prefix Letter (& number)

F = Series F frame mounted pump

0, 1, 2, 3, 4 = F Series frame size

C = Series C close coupled pump

Middle numbers

First or first set of two = Basic pump size by maximum impeller diameter

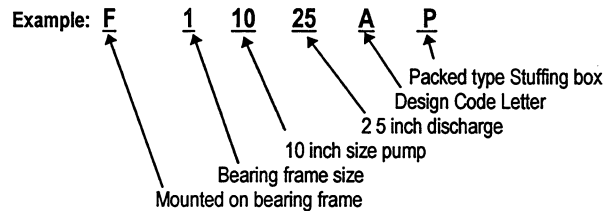
Second set of two = Discharge size In inches

Suffix Letters;

A = Design code letter

P = Packed type stuffing box

M = Mechanical seal type stuffing box



**SERIES C - CLOSE COUPLED PUMP DATA**

Basic Pump	Motor Frame	Style M - Mechanical Seal			Style P - Packing ④						
		Motor Shaft Extension	Shaft Dia. Impeller	Shaft Sleeve Dia Seal	Motor Shaft Extension	Shaft Dia. Impeller	Shaft Sleeve Dia. Packing	Stuffing Box		Packing Ring Quantity	Lantern Ring Quantity
							Bore	Depth			
PE	56J	56J	7/16-20UNF	.625 (Shaft Dia no sleeve)	-	-	-	-	-	-	-
PE ⑤	143-215	JM	.875	1.25	-	-	-	-	-	-	-
6 Through 14	143-184	JM	.875	1.25	JP	.875	1.25	2.03	2.62	6	Standard without Lantern ring ④
	213-215	JM	.875	1.25	JP	1.250	1.75	2.50	2.62	6	
	254-326	JM	1.250	1.50	JP	1.250	1.75	2.50	2.62	6	
14	364	JP	1.625	2.25	JP	1.625	2.25	3.00	3.00	6	

**SERIES F - FRAME MOUNTED PUMP DATA**

Bearing Frame	Shaft Dia. through		Style M - Mechanical Seal Shaft Sleeve Dia.	Style P - Packing ④				Bearing Reference Number New Departure		
	Impeller	Coupling		Shaft Sleeve Dia.	Bore	Depth	Packing Ring Quantity	Lantern Ring Quantity	Inboard	Outboard
F1	0.875	1.125	1.25	1.25	2.03	2.62	6	-	ND3206	ND43207
F2	1.250	1.250	1.50	1.75	2.50	2.62	6	-	ND1209	ND43308
F3—M	1.250	1.875	1.50	-	-	-	-	Standard without ring	ND1212	ND43311
F3—P	1.625	1.875	-	2.25	3.00	3.00	6	④	ND1212	ND43311
F4	1.625	1.875	2.25	2.25	3.00	3.00	6		U1212TM	ND45311

① Refer to page 1 Section 2320 for maximum shaft speed for Series F pumps. ② Suction Flange is equivalent to 125 Lb. ANSI connection and rating

③ Discharge Flange is 125 Lb. ANSI dimensions and ratings, 250 Lb ANSI available only on 1125 and 1140 models.

④ For suction lift applications optional lantern ring and stuffing box wafer seal piping are required with a quantity of 5 packing rings.

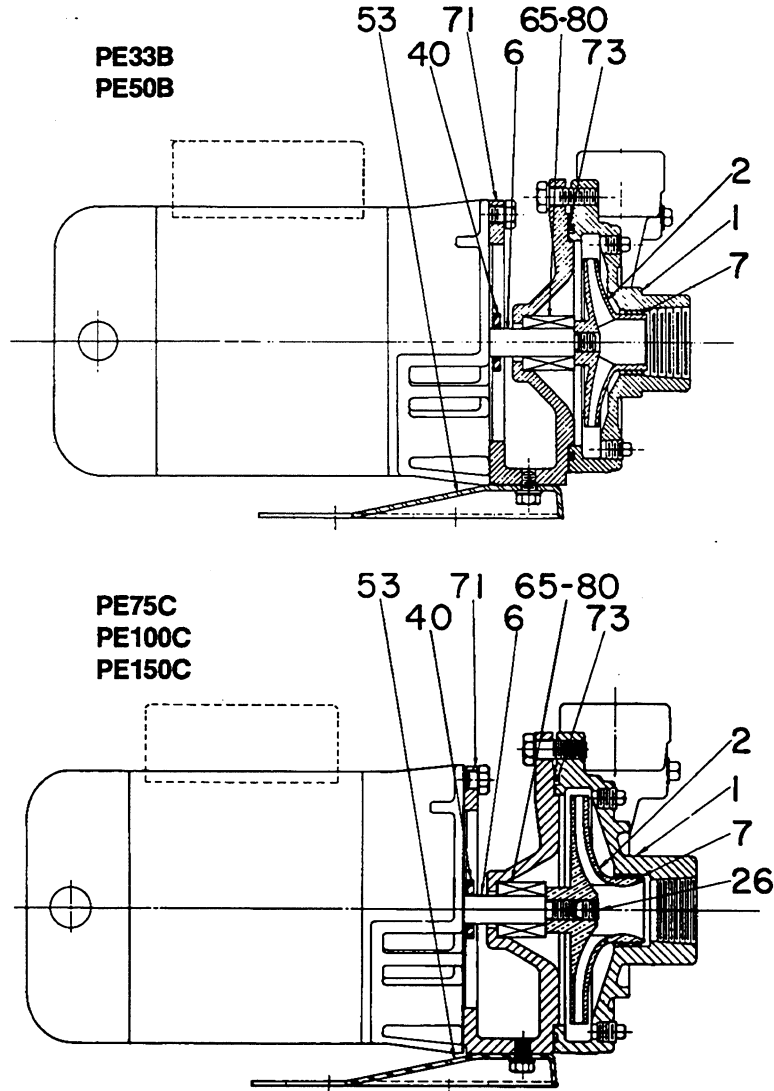
⑤ PE203-583 is same as 615A pump with 610A impellers, PE753, 783 same as 615A pump, PE833-838 same as 810A pump.

Subject to change without notice

END SUCTION GENERAL SERVICE PUMPS  
 SERIES PE - CLOSE COUPLED



Peerless Pump Company  
 Indianapolis, IN 46207-7025

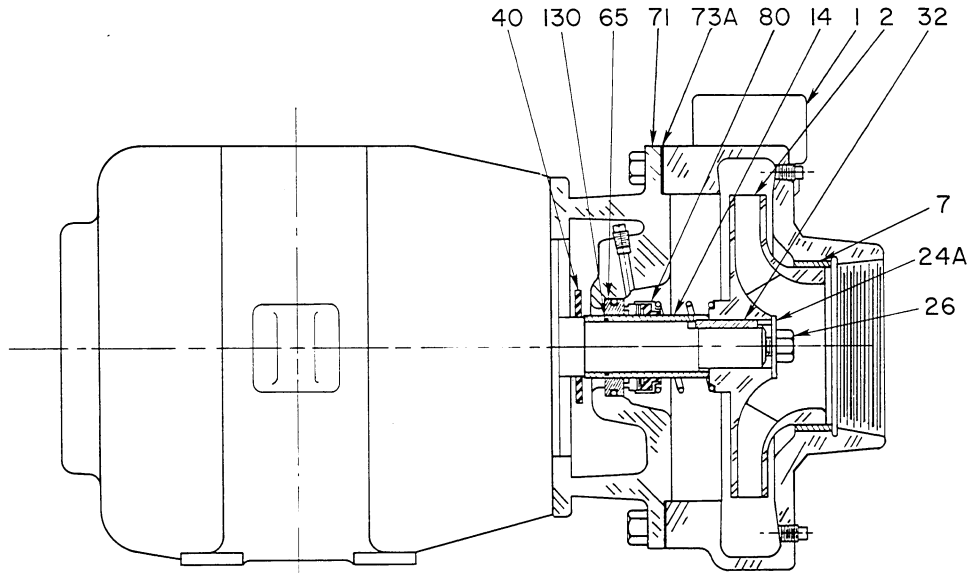


Materials of Standard Construction

Item No.	Part Description	Material Description	
1	Casing	Cast Iron	
2	Impeller	Bronze	
6	Shaft	11-13% Cr. Stainless. Steel	
7	Casing Ring	Bronze	
26	Impeller Lock Screw	18-8 Stainless Steel	
40	Deflector	Rubber	
53	Base	Steel	
65	Mechanical Seal Seat	Ceramic	
71	Adapter	Cast Iron	
73	Casing "O" Ring	Rubber	
80	Mechanical Seal Rotary Parts	Flexible	Rubber
		Metal	Brass
		Washer	Carbon
		Spring	18-8 Stainless. Steel



**END SUCTION PUMPS**  
**Type PE — Close Coupled**  
**— Mechanical Seal —**



PE203, 283, 303, 383, 503, 583, 753, 783  
PE833, 834, 835, 836, 837, 838

**Standard Materials of Construction**

Item No.	Part Description	Material Description	
1	Casing	Cast Iron	
2	Impeller, PE203 Through PE783	Bronze	
2	Impeller, PE833 Through PE838	Bronze	
7	Casing Ring	Bronze	
14	Shaft Sleeve	Bronze	
24A	Impeller Washer	18-8 Stainless Steel	
26	Impeller Lock Screw	18-8 Stainless Steel	
32	Impeller Key	Steel	
40	Deflector	Rubber	
65	Mechanical Seal Seat	Ni-Resist	
71	Adapter	Cast Iron	
65	Mechanical Seal Seat	Ni-Resist	
73A	Casing Casket	Vegetable Fiber	
80	Mechanical Seal Rotary Parts	Flexible	Buna Rubber
		Metal	18-8 Stainless Steel
		Spring	18-8 Stainless Steel
		Bellows	Buna Rubber
130	Shaft Sleeve "O" Ring	Buna-N Rubber	

File 4851158-A  
Rev. 12-86