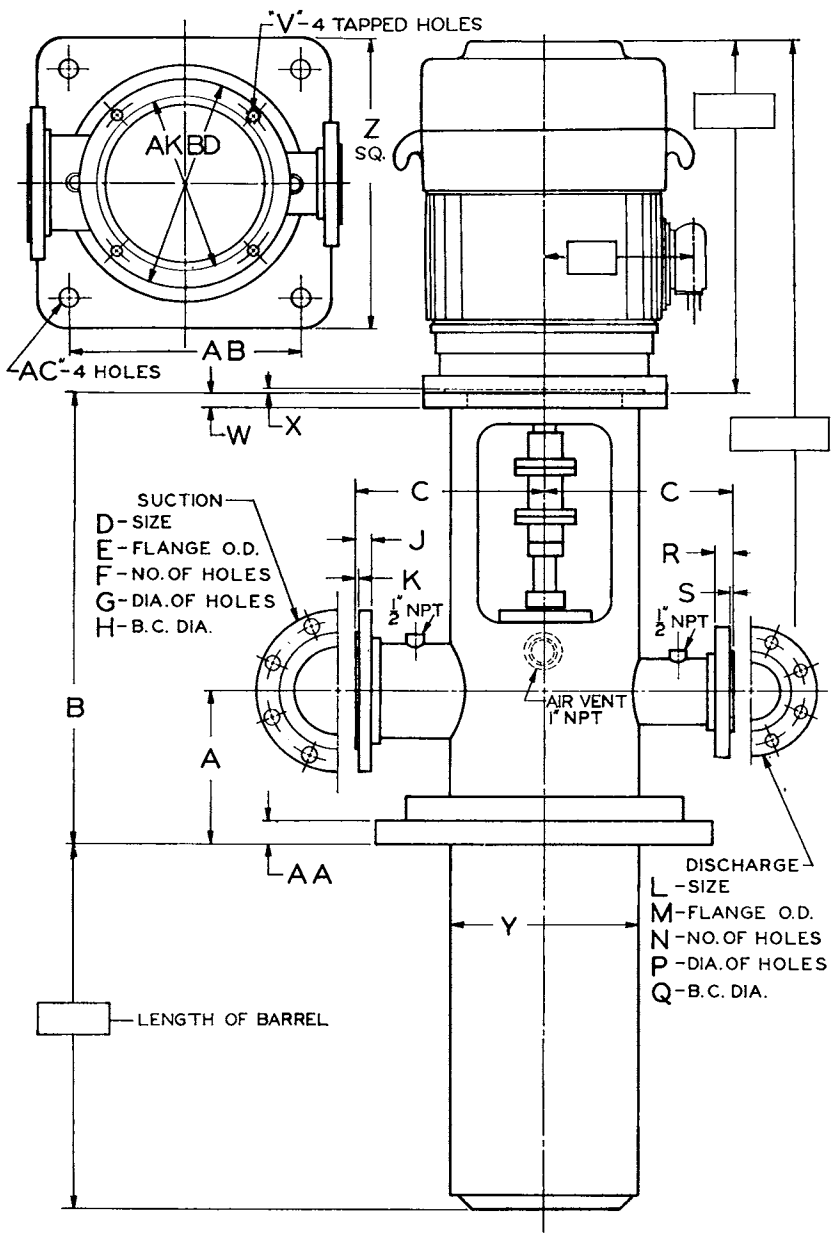


# Models HL, HM and HH

## Hydro-Line Pumps

Sizes 2x3x8 and larger



HYDRO-LINE SIZE	NOZZLE HEAD																				BARREL								
	GENERAL			SUCTION ASA B16.5							DISCHARGE ASA B16.5						DRIVER												
	A	B	C	RATING	D	E	F	G	H	J	K	RATING	L	M	N	P	Q	R	S	AK	BD	V	W	X	Y	Z	AA	AB	AC
TYPE HL																													
2-3-8 HL	8"	32 3/4"	10"	150 LB.	3"	7 1/2"	4"	3/4"	6"	15/16"	1/16"	150 LB.	2"	6"	4"	3/4"	4 1/2"	3/4"	1/16"	8 1/4"	12"	3/8"	1"	1/8"	8 3/8"	17 1/2"	1 1/2"	13 1/2"	1"
3-4-10 HL	9"	34 1/2"	11 1/4"	150 LB.	4"	9"	8"	3/4"	7 1/2"	15/16"	1/16"	150 LB.	3"	7 1/2"	4"	3/4"	6"	1/16"	8 1/4"	12"	5/16"	1 1/4"	1/8"	10 3/4"	10 3/4"	20"	1 1/2"	16"	1"
4-6-10 HL	11 1/8"	37 1/2"	11 1/2"	150 LB.	6"	11"	8"	7/8"	9 1/2"	1"	1/16"	150 LB.	4"	9"	8"	3/4"	7 1/2"	15/16"	1/16"	13 1/2"	16 1/2"	5/16"	1 1/4"	15/16"	10 3/4"	20"	1 1/2"	16"	1"
4-6-12 HL	11 1/8"	38 1/2"	12 3/4"	150 LB.	6"	11"	8"	7/8"	9 1/2"	1"	1/16"	150 LB.	4"	9"	8"	3/4"	7 1/2"	15/16"	1/16"	13 1/2"	16 1/2"	5/16"	1 1/4"	15/16"	12 3/4"	23"	1 1/2"	19"	1"
6-8-16 HL	13 3/8"	42 3/8"	15 1/2"	150 LB.	8"	13 1/2"	8"	7/8"	11 3/4"	1 1/8"	1/16"	150 LB.	6"	11"	8"	7/8"	9 1/2"	1"	1/16"	13 1/2"	20"	5/16"	1 1/4"	15/16"	16"	27 1/2"	2"	23 1/2"	1"
6-8-18 HL	13 3/8"	46 5/8"	16 1/2"	150 LB.	8"	13 1/2"	8"	7/8"	11 3/4"	1 1/8"	1/16"	150 LB.	6"	11"	8"	7/8"	9 1/2"	1"	1/16"	13 1/2"	20"	5/16"	1 1/4"	15/16"	18"	29"	2 1/2"	25"	1"
8-10-18 HL	15 5/8"	48 1/2"	16 1/2"	150 LB.	10"	16"	12"	1"	14 1/4"	1 3/8"	1/16"	150 LB.	8"	13 1/2"	8"	7/8"	11 3/4"	1 1/8"	1/16"	13 1/2"	24 1/2"	5/16"	1 1/4"	15/16"	18"	29"	2 1/2"	25"	1"

TYPE HM																													
2-3-8 HM	8"	32 3/4"	10"	150 LB.	3"	7 1/2"	4"	3/4"	6"	15/16"	1/16"	300 LB.	2"	6 1/2"	8"	3/4"	5"	7/8"	1/16"	8 1/4"	12"	3/8"	1"	1/8"	8 3/8"	17 1/2"	1 1/2"	13 1/2"	1"
3-4-10 HM	9"	34 1/2"	11 1/4"	150 LB.	4"	9"	8"	3/4"	7 1/2"	15/16"	1/16"	300 LB.	3"	8 1/2"	8"	7/8"	6 5/8"	1 1/8"	1/16"	13 1/2"	16 1/2"	5/16"	1 1/4"	15/16"	10 3/4"	20"	1 1/2"	16"	1"
4-6-10 HM	11 1/8"	37 1/2"	11 1/2"	150 LB.	6"	11"	8"	7/8"	9 1/2"	1"	1/16"	300 LB.	4"	10"	8"	7/8"	7 1/8"	1 1/4"	1/16"	13 1/2"	16 1/2"	5/16"	1 1/4"	15/16"	10 3/4"	20"	1 1/2"	16"	1"
4-6-12 HM	11 1/8"	38 1/2"	12 3/4"	150 LB.	6"	11"	8"	7/8"	9 1/2"	1"	1/16"	300 LB.	4"	10"	8"	7/8"	7 1/8"	1 1/4"	1/16"	13 1/2"	16 1/2"	5/16"	1 1/4"	15/16"	12 3/4"	23"	1 1/2"	19"	1"
6-8-16 HM	13 3/8"	42 3/8"	15 1/2"	150 LB.	8"	13 1/2"	8"	7/8"	11 3/4"	1 1/8"	1/16"	300 LB.	6"	12 1/2"	12"	7/8"	10 5/8"	1 1/4"	1/16"	13 1/2"	20"	5/16"	1 1/4"	15/16"	16"	27 1/2"	2"	23 1/2"	1"
6-8-18 HM	13 3/8"	46 5/8"	16 1/2"	150 LB.	8"	13 1/2"	8"	7/8"	11 3/4"	1 1/8"	1/16"	300 LB.	6"	12 1/2"	12"	7/8"	10 5/8"	1 1/4"	1/16"	13 1/2"	24 1/2"	5/16"	1 1/4"	15/16"	18"	29"	2 1/2"	25"	1"
8-10-18 HM	15 5/8"	48 1/2"	16 1/2"	150 LB.	10"	16"	12"	1"	14 1/4"	1 3/8"	1/16"	300 LB.	8"	15"	12"	1"	13"	1 1/8"	1/16"	13 1/2"	24 1/2"	5/16"	1 1/4"	15/16"	18"	29"	2 1/2"	25"	1"

TYPE HH																													
2-3-8 HH	8"	33 1/2"	10"	300 LB.	3"	8 1/4"	8"	7/8"	6 5/8"	1 1/8"	1/16"	300 LB.	2"	6 1/2"	8"	3/4"	5"	7/8"	1/16"	8 1/4"	12"	3/8"	1"	1/8"	8 3/8"	19"	1 1/2"	15"	1"
3-4-10 HH	9"	35 1/4"	11 1/4"	300 LB.	4"	10"	8"	7/8"	7 7/8"	1 1/4"	1/16"	300 LB.	3"	8 1/2"	8"	7/8"	6 5/8"	1 1/8"	1/16"	13 1/2"	16 1/2"	5/16"	1 1/4"	15/16"	10 3/4"	21 1/2"	1 1/2"	17 1/2"	1"
4-6-10 HH	11 1/8"	38 3/8"	11 1/4"	300 LB.	6"	12 1/2"	12"	7/8"	10 5/8"	1 7/16"	1/16"	300 LB.	4"	10"	8"	7/8"	7 7/8"	1 1/4"	1/16"	13 1/2"	16 1/2"	5/16"	1 1/4"	15/16"	10 3/4"	21 1/2"	1 1/2"	17 1/2"	1"
4-6-12 HH	11 1/8"	38 3/8"	12 3/4"	300 LB.	6"	12 1/2"	12"	7/8"	10 5/8"	1 7/16"	1/16"	300 LB.	4"	10"	8"	7/8"	7 7/8"	1 1/4"	1/16"	13 1/2"	16 1/2"	5/16"	1 1/4"	15/16"	12 3/4"	24 1/2"	2"	20 1/2"	1"
6-8-16 HH	14 1/2"	43 1/8"	15 1/2"	300 LB.	8"	15"	12"	1"	13 1/2"	1 5/8"	1/16"	300 LB.	6"	12 1/2"	12"	7/8"	10 5/8"	1 1/4"	1/16"	13 1/2"	20"	5/16"	1 1/4"	15/16"	16"	29 1/2"	2 1/2"	25 1/2"	1"
6-8-18 HH	14 1/2"	46 5/8"	16 1/2"	300 LB.	8"	15"	12"	1"	13 1/2"	1 5/8"	1/16"	300 LB.	6"	12 1/2"	12"	7/8"	10 5/8"	1 1/4"	1/16"	13 1/2"	24 1/2"	5/16"	1 1/4"	15/16"	18"	32"	2 3/4"	28"	1"
8-10-18 HH	16 1/4"	48 1/2"	16 1/2"	300 LB.	10"	17 1/2"	16"	1 1/8"	15 1/4"	1 7/8"	1/16"	300 LB.	8"	15"	12"	1"	13"	1 5/8"	1/16"	13 1/2"	24 1/2"	5/16"	1 1/4"	15/16"	18"	32"	2 3/4"	28"	1"

Dimensions shown are not certified and are subject to change without notice

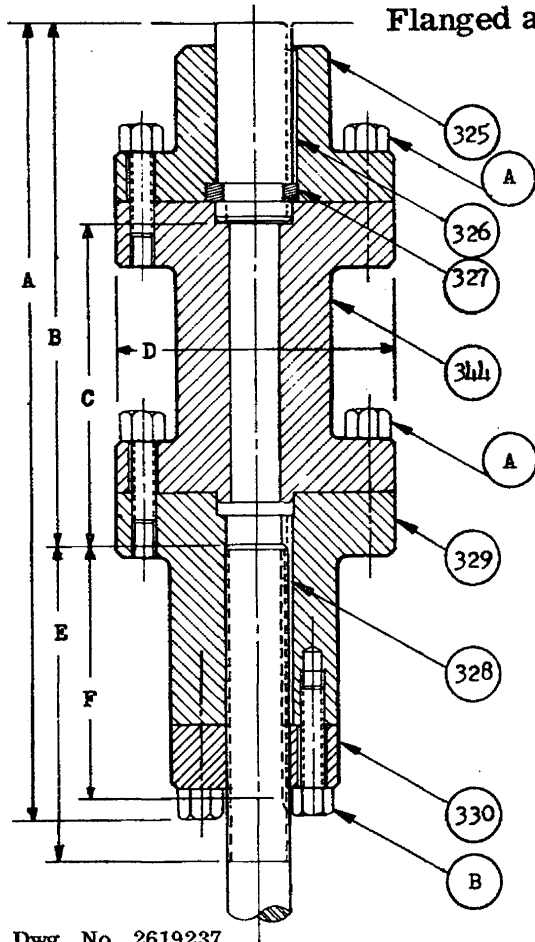
**Type H Hydro-Line Pumps**

Standard Models HL - HM -HH  
and

Types VDM and HP Hydro-Lines

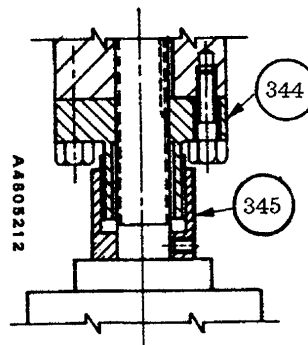
**Flanged and Spacer Type Couplings**

(Pump to VSS Driver)

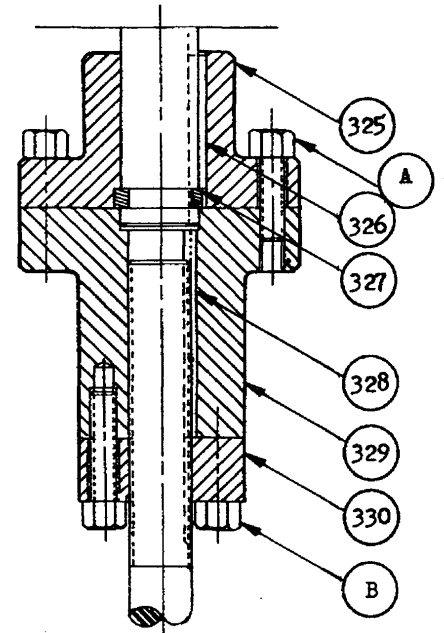


Dwg. No. 2619237

**Spacer Type**



**For Model HP  
with Spacer Coupling  
and Mechanical Seal**



**Flanged Type**

Dwg. No. 2619238

- | Item No. | Description             |
|----------|-------------------------|
| 325      | motor half coupling     |
| 326      | motor shaft key         |
| 327      | motor shaft split ring  |
| 328      | pump shaft key          |
| 329      | pump half coupling      |
| 330      | adjusting nut           |
| 344      | coupling spacer         |
| 345      | seal collar lock nut    |
| A        | coupling cap screw      |
| B        | adjusting nut cap screw |

Coupling Size		Spacer Type*			D	E	F	Max. Rating	
Motor Shaft	Pump Shaft	A Max	B $\pm \frac{1}{4}$	C $\pm \frac{1}{4}$				H.P. Per 100 RPM	Thrust in lb.
7/8	7/8	10-1/8	8	5 1/4	3	3-1/2	3	1.0	2,000
1-1/8	7/8	10-5/8	8	5 1/4	3-3/4	3-1/2	3	1.9	5,000
1-1/8	1	10-5/8	8	5 1/4	3-3/4	3-3/4	3	2.24	5,000
1-5/8	7/8	12-7/8	9-3/4	5 3/4	4-7/8	3-1/2	3	2.74	5,400
1-5/8	1	12-7/8	9-3/4	5 3/4	4-7/8	3-3/4	3	3.13	5,400
1-5/8	1-3/16	13-1/8	9-3/4	5 3/4	4-7/8	5	4	4.64	7,400
1-5/8	1-1/2	14-1/8	9-3/4	5 3/4	4-7/8	5	4	9.55	7,400
2-1/8	1-3/16	13-5/8	9-3/4	5 3/4	6-3/8	5	4	5.96	8,000
2-1/8	1-1/2	14	9-3/4	5 3/4	6-3/8	5	4	9.05	10,000
2-1/8	1-15/16	14-1/2	9-3/4	5 3/4	6-3/8	6	5	19.0	10,000



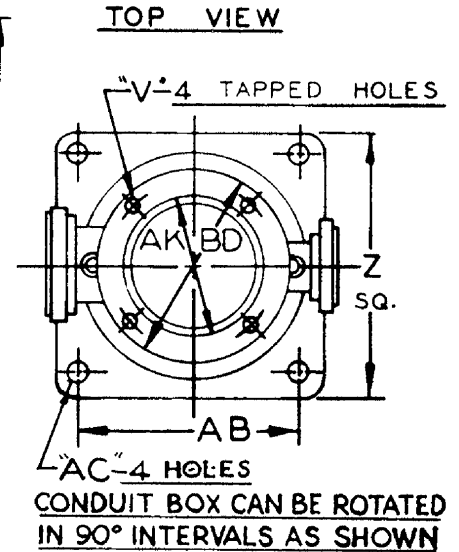
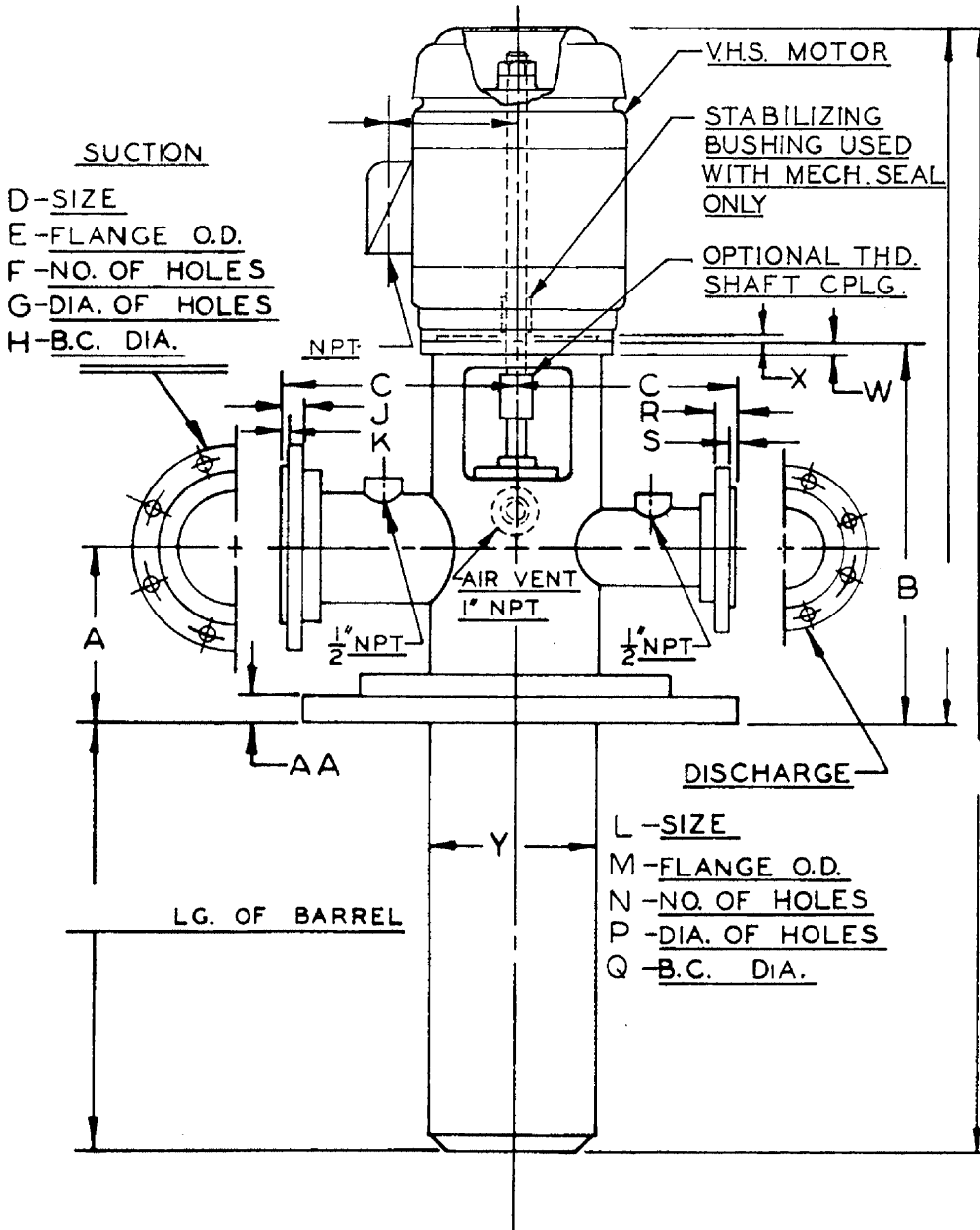
Peerless Pump Company  
Indianapolis, IN 46207-7026

\* For non-spacer type, subtract 4-3/4".

Dimensions shown are not certified and are subject to change without notice.

## Standard Type HE Hydro-Line Pumps

HYDRO-LINE SIZE	NOZZLE HEAD																				BARREL								
	GENERAL			SUCTION ASA B16.5							DISCHARGE ASA B16.5						DRIVER				BARREL								
	A	B	C	RATING	D	E	F	G	H	J	K	RATING	L	M	N	P	Q	R	S	AK	BD	V	W	X	Y	Z	AA	AB	AC
2-3-8 HE	8"	23 <sup>5</sup> / <sub>8</sub> "	10"	150 LB	3"	7 <sup>1</sup> / <sub>2</sub> "	4"	3 <sup>3</sup> / <sub>4</sub> "	6"	15 <sup>15</sup> / <sub>16</sub> "	1 <sup>1</sup> / <sub>16</sub> "	150 LB	2"	6"	4"	3 <sup>3</sup> / <sub>4</sub> "	4 <sup>3</sup> / <sub>4</sub> "	3 <sup>3</sup> / <sub>4</sub> "	1 <sup>1</sup> / <sub>16</sub> "	8 <sup>1</sup> / <sub>4</sub> "	12"	8 <sup>5</sup> / <sub>8</sub> "	1"	1 <sup>1</sup> / <sub>8</sub> "	8 <sup>5</sup> / <sub>8</sub> "	17 <sup>1</sup> / <sub>2</sub> "	1 <sup>1</sup> / <sub>4</sub> "	13 <sup>1</sup> / <sub>2</sub> "	1"
3-4-10 HE	9 <sup>1</sup> / <sub>8</sub> "	26 <sup>9</sup> / <sub>16</sub> "	11 <sup>1</sup> / <sub>4</sub> "	150 LB	4"	9"	8"	3 <sup>3</sup> / <sub>4</sub> "	7 <sup>1</sup> / <sub>2</sub> "	15 <sup>15</sup> / <sub>16</sub> "	1 <sup>1</sup> / <sub>16</sub> "	150 LB	3"	7 <sup>1</sup> / <sub>2</sub> "	4"	3 <sup>3</sup> / <sub>4</sub> "	6"	15 <sup>15</sup> / <sub>16</sub> "	1 <sup>1</sup> / <sub>16</sub> "	8 <sup>1</sup> / <sub>4</sub> "	12"	8 <sup>5</sup> / <sub>8</sub> "	1"	1 <sup>1</sup> / <sub>8</sub> "	10 <sup>3</sup> / <sub>4</sub> "	20"	1 <sup>3</sup> / <sub>8</sub> "	16"	1"
4-6-10 HE	11 <sup>1</sup> / <sub>8</sub> "	29 <sup>7</sup> / <sub>2</sub> "	11 <sup>3</sup> / <sub>4</sub> "	150 LB	6"	11"	8"	7 <sup>7</sup> / <sub>8</sub> "	9 <sup>1</sup> / <sub>2</sub> "	1 <sup>1</sup> / <sub>16</sub> "	1 <sup>1</sup> / <sub>16</sub> "	150 LB	4"	9"	8"	3 <sup>3</sup> / <sub>4</sub> "	7 <sup>1</sup> / <sub>2</sub> "	15 <sup>15</sup> / <sub>16</sub> "	1 <sup>1</sup> / <sub>16</sub> "	13 <sup>1</sup> / <sub>2</sub> "	16 <sup>1</sup> / <sub>2</sub> "	5 <sup>5</sup> / <sub>8</sub> "	11 <sup>1</sup> / <sub>8</sub> "	15 <sup>15</sup> / <sub>16</sub> "	10 <sup>3</sup> / <sub>4</sub> "	20"	1 <sup>3</sup> / <sub>8</sub> "	16"	1"
4-6-12 HE	11 <sup>3</sup> / <sub>8</sub> "	29 <sup>15</sup> / <sub>16</sub> "	12 <sup>3</sup> / <sub>4</sub> "	150 LB	6"	11"	8"	7 <sup>7</sup> / <sub>8</sub> "	9 <sup>1</sup> / <sub>2</sub> "	1"	1 <sup>1</sup> / <sub>16</sub> "	150 LB	4"	9"	8"	3 <sup>3</sup> / <sub>4</sub> "	7 <sup>1</sup> / <sub>2</sub> "	15 <sup>15</sup> / <sub>16</sub> "	1 <sup>1</sup> / <sub>16</sub> "	13 <sup>1</sup> / <sub>2</sub> "	16 <sup>1</sup> / <sub>2</sub> "	5 <sup>5</sup> / <sub>8</sub> "	11 <sup>1</sup> / <sub>8</sub> "	15 <sup>15</sup> / <sub>16</sub> "	12 <sup>3</sup> / <sub>4</sub> "	23"	1 <sup>5</sup> / <sub>8</sub> "	19"	1"
6-8-16 HE	13 <sup>3</sup> / <sub>4</sub> "	34 <sup>1</sup> / <sub>2</sub> "	15 <sup>1</sup> / <sub>2</sub> "	150 LB	8"	13 <sup>1</sup> / <sub>2</sub> "	8"	7 <sup>7</sup> / <sub>8</sub> "	11 <sup>3</sup> / <sub>4</sub> "	1 <sup>1</sup> / <sub>8</sub> "	1 <sup>1</sup> / <sub>16</sub> "	150 LB	6"	11"	8"	7 <sup>7</sup> / <sub>8</sub> "	9 <sup>1</sup> / <sub>2</sub> "	1"	1 <sup>1</sup> / <sub>16</sub> "	13 <sup>1</sup> / <sub>2</sub> "	20"	5 <sup>5</sup> / <sub>8</sub> "	11 <sup>1</sup> / <sub>8</sub> "	15 <sup>15</sup> / <sub>16</sub> "	16"	27 <sup>1</sup> / <sub>2</sub> "	2"	23 <sup>1</sup> / <sub>2</sub> "	1"
6-8-18 HE	13 <sup>7</sup> / <sub>8</sub> "	35 <sup>1</sup> / <sub>2</sub> "	16 <sup>1</sup> / <sub>2</sub> "	150 LB	8"	13 <sup>1</sup> / <sub>2</sub> "	8"	7 <sup>7</sup> / <sub>8</sub> "	11 <sup>3</sup> / <sub>4</sub> "	1 <sup>1</sup> / <sub>8</sub> "	1 <sup>1</sup> / <sub>16</sub> "	150 LB	6"	11"	8"	7 <sup>7</sup> / <sub>8</sub> "	9 <sup>1</sup> / <sub>2</sub> "	1"	1 <sup>1</sup> / <sub>16</sub> "	13 <sup>1</sup> / <sub>2</sub> "	20"	5 <sup>5</sup> / <sub>8</sub> "	11 <sup>1</sup> / <sub>8</sub> "	15 <sup>15</sup> / <sub>16</sub> "	18"	29"	2 <sup>1</sup> / <sub>8</sub> "	25"	1"
8-10-18 HE	15 <sup>5</sup> / <sub>8</sub> "	41 <sup>1</sup> / <sub>2</sub> "	16 <sup>1</sup> / <sub>2</sub> "	150 LB	10"	16"	12"	1"	14 <sup>1</sup> / <sub>4</sub> "	1 <sup>1</sup> / <sub>16</sub> "	1 <sup>1</sup> / <sub>16</sub> "	150 LB	8"	13 <sup>1</sup> / <sub>2</sub> "	8"	7 <sup>7</sup> / <sub>8</sub> "	11 <sup>3</sup> / <sub>4</sub> "	1 <sup>1</sup> / <sub>8</sub> "	1 <sup>1</sup> / <sub>16</sub> "	13 <sup>1</sup> / <sub>2</sub> "	24 <sup>1</sup> / <sub>2</sub> "	5 <sup>5</sup> / <sub>8</sub> "	11 <sup>1</sup> / <sub>8</sub> "	15 <sup>15</sup> / <sub>16</sub> "	18"	29"	2 <sup>1</sup> / <sub>8</sub> "	25"	1"



Dwg. No.  
 2840017

Dimensions shown are not certified and are subject to change without notice

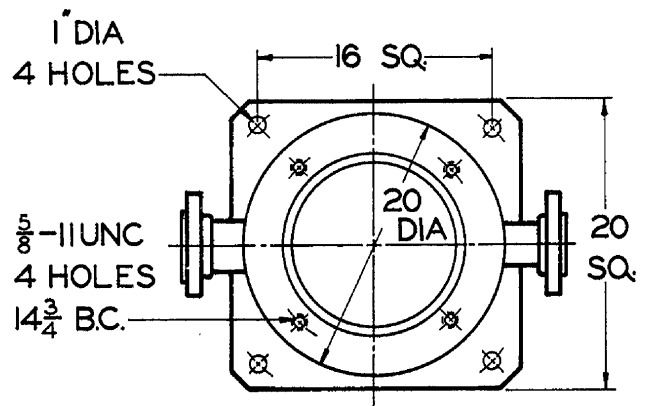
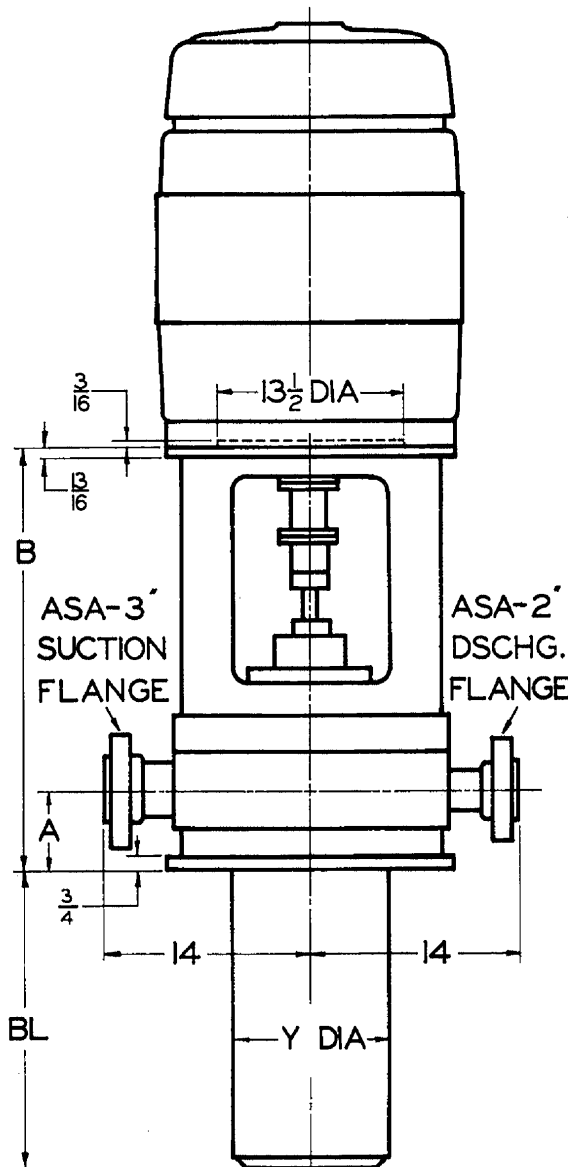


# MODEL HP HYDROLINE INJECTION PUMPS

SIZES 2 x 3 x 10  
2 x 3 x 12

HYDROLINE SIZE	BOWL SIZE	MAX. PRESSURE PSI			SHAFT * MAX BHP	SUCTION FLANGE		DSCHG. FLANGE		DIMENSION		
		SUCTION	DSCHG.	DIFF'L		RATING	FACE	RATING	FACE	A	B	Y
2x3x10 HP-1	6 LB	275	1000	1000	143	150 LB	RAISED FACE.	600 LB.	RAISED FACE.	6	33 21/32	10 3/4
2x3x10 HP-2	6 LB	1000	2000	1000	143	600 LB	RING-JOINT ONLY WHEN ORDERED	900 LB.	RING-JOINT ONLY WHEN ORDERED	6	33 21/32	10 3/4

\* BHP IS BASED HERE ON 3460 RPM, 17-4 PH STN. STL. OF 135,000 PSI TENSILE STRENGTH, KEYED SHAFT



BARREL LENGTH  $BL = U + T + (X \times S)$  \*\*

LENGTH OF:	6 LB	
ONE STAGE UNIT	U	20 7/32
ADDITIONAL STAGE	S	6 1/4
TANDEM ADAPTER	T	12 7/32

\*\* TANDEM ADAPTER REQUIRED ONLY IF NUMBER OF STAGES (X) IS GREATER THAN:

6 LB	
33	

Dwg. No. 2840084

Dimensions shown are not certified and are subject to change without notice

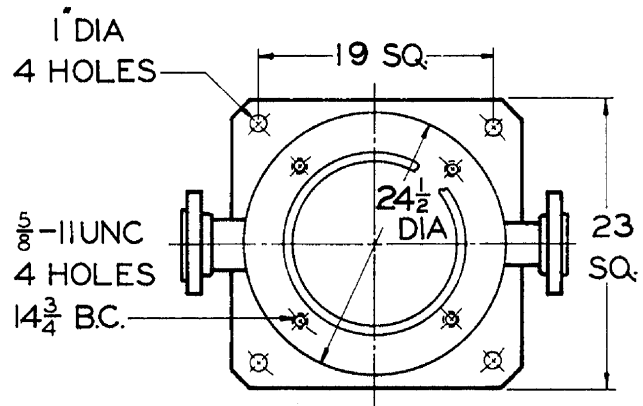
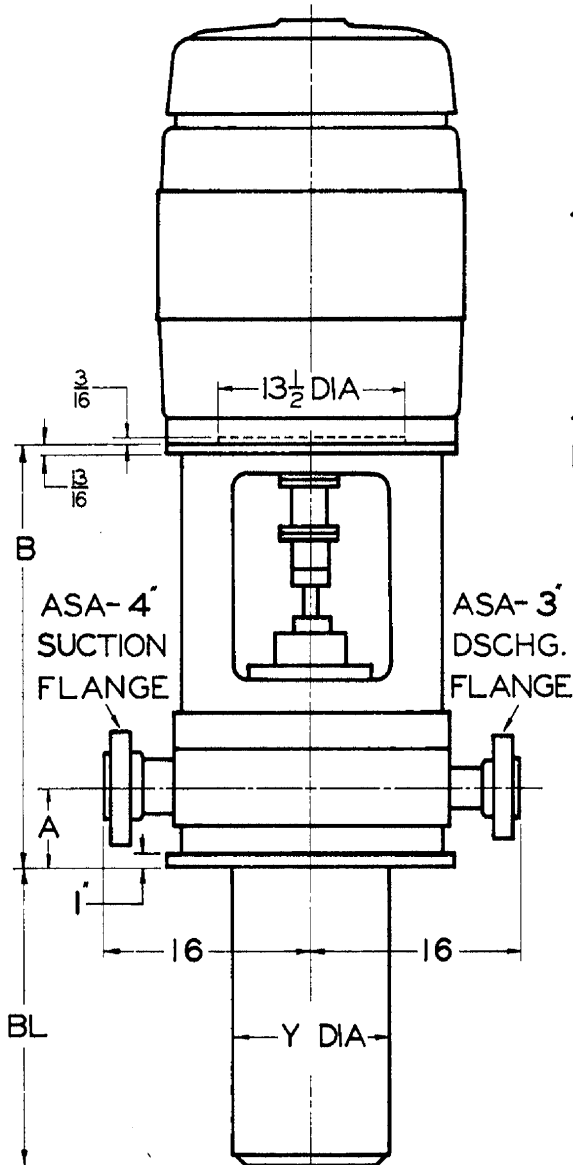


# MODEL HP HYDROLINE INJECTION PUMPS

## SIZE 3 x 4 x 10

HYDROLINE SIZE	BOWL SIZE	MAX. PRESSURE PSI			SHAFT * MAX BHP	SUCTION FLANGE		DSCHG. FLANGE		DIMENSION		
		SUCTION	DSCHG.	DIFF'L		RATING	FACE	RATING	FACE	A	B	Y
3 x 4 x 10 HP-1	7 LA	275	1000	1000	227	150 LB	RAISED FACE.	600 LB	RAISED FACE.	6 1/2	36 21/32	10 3/4
3 x 4 x 10 HP-1	8 LB	275	1000	1000	488	150 LB		600 LB	RAISED FACE.	6 1/2	37 17/32	10 3/4
3 x 4 x 10 HP-2	7 LA	1000	2000	1000	227	600 LB	RING-JOINT ONLY WHEN ORDERED	900 LB	RING-JOINT ONLY WHEN ORDERED	6 1/2	36 21/32	10 3/4
3 x 4 x 10 HP-2	8 LB	1000	2000	1000	488	600 LB		900 LB	RING-JOINT ONLY WHEN ORDERED	6 1/2	37 17/32	10 3/4

\* BHP IS BASED HERE ON 3460 RPM, 17-4 PH STN. STL. OF 135,000 PSI TENSILE STRENGTH, KEYED SHAFT.



BARREL LENGTH  $BL = U + T + (X \cdot S)$  \*\*

LENGTH OF:	7 LA	8 LB
ONE STAGE UNIT	U 25 1/2	24 3/4
ADDITIONAL STAGE	S 6 1/8	7 3/8
TANDEM ADAPTER	T 12 1/8	8 3/8

\*\* TANDEM ADAPTER REQUIRED ONLY IF NUMBER OF STAGES (X) IS GREATER THAN:

	7 LA	8 LB
	29	27

Dwg. No. 2840085

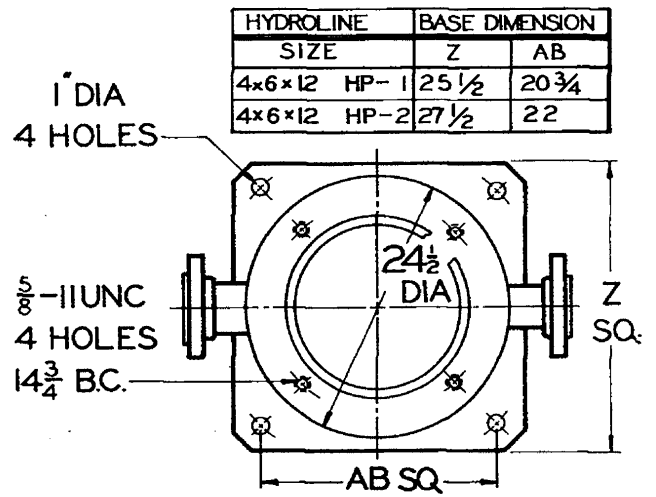
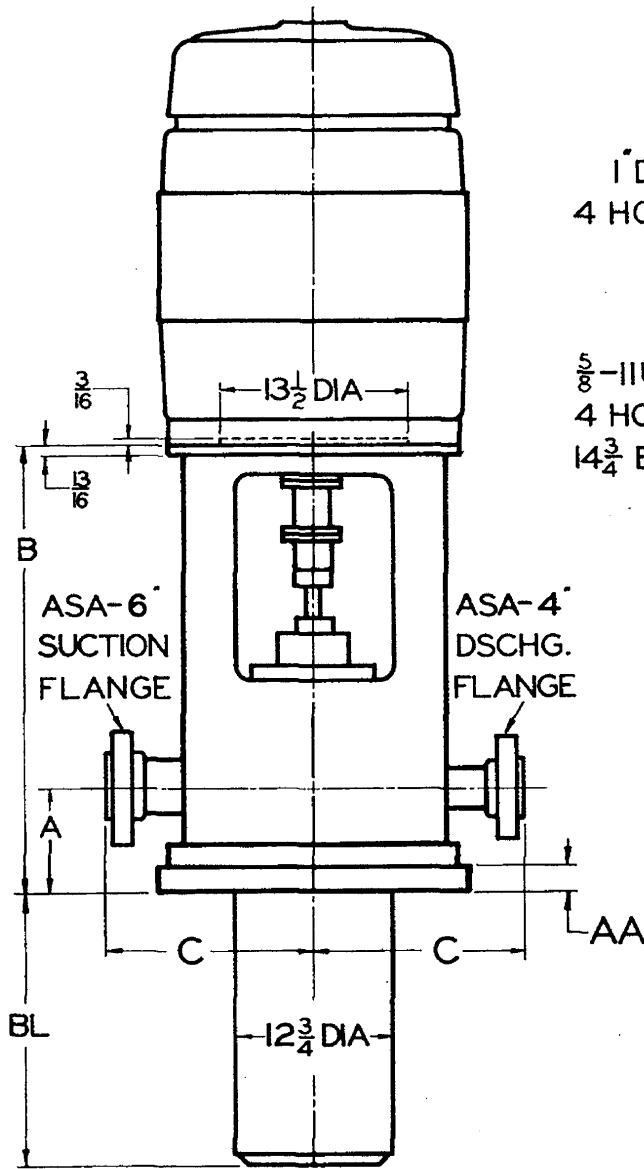
Dimensions shown are not certified and are subject to change without notice

# MODEL HP HYDROLINE INJECTION PUMPS

## SIZE 4 x 6 x 12

HYDROLINE	BOWL	MAX. PRESSURE PSI			SHAFT *	SUCTION FLANGE		DSCHG. FLANGE		DIMENSION			
SIZE	SIZE	SUCTION	DSCHG.	DIFF'L	MAXBHP	RATING	FACE	RATING	FACE	A	B	C	AA
4x6x12 HP-1	8 LB	150	1000	1000	488	150 LB	RAISED FACE.	600 LB	RAISED FACE.	11	42 1/4	16	1 1/4
4x6x12 HP-1	10 LA	150	1000	1000	488	150 LB		600 LB	RAISED FACE.	11	42 1/4	16	1 1/4
4x6x12 HP-2	8 LB	1000	2000	1000	488	600 LB	RING-JOINT ONLY WHEN ORDERED	900 LB	RING-JOINT ONLY WHEN ORDERED	13 1/4	44 1/2	18	3 1/2
4x6x12 HP-2	10 LA	1000	2000	1000	488	600 LB		900 LB		RING-JOINT ONLY WHEN ORDERED	13 1/4	44 1/2	18

\* BHP IS BASED HERE ON 3460 RPM, 17-4 PH STN. STL. OF 135,000 PSI TENSILE STRENGTH, KEYED SHAFT



HYDROLINE	BASE DIMENSION
SIZE	Z AB
4x6x12 HP-1	25 1/2 20 3/4
4x6x12 HP-2	27 1/2 22

BARREL LENGTH  $BL = U + T + (X \times S)$  \*\*

LENGTH OF:	8 LB	10 LA
ONE STAGE UNIT	U 21 5/16	25 3/8
ADDITIONAL STAGE	S 7 3/8	7 1/16
TANDEM ADAPTER	T 8 3/8	9 1/4

\*\* TANDEM ADAPTER REQUIRED ONLY IF NUMBER OF STAGES (X) IS GREATER THAN:

	8 LB	10 LA
	26	26

Dwg. No. 2840086