



A-C 13R Residential Fire Pump System

Close-coupled 1580 Series
Capacities: 35 to 150 GPM
Pressures: up to 70 PSI

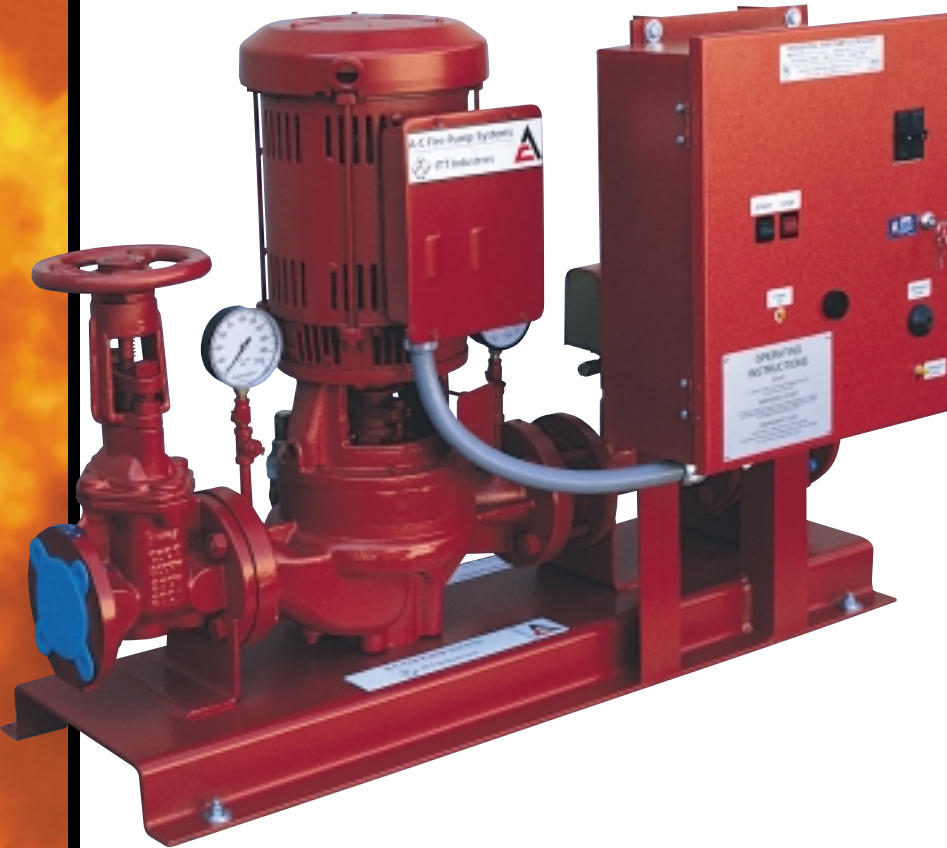
System is designed for residential occupancies up to and including four stories. UL-listed for fire pump service.

System Features

- In compliance with NFPA 13-R and NFPA 20.
- CIBF pump construction.
- Hydrostatic test on package.
- Certified performance test on pump unit.
- ODP JP shaft motor; 5 and 7.5 HP, 230/1/60.
- UL-listed flow switch with remote contacts.
- UL-listed/FM-approved suction and discharge control valves.
- Check valve.
- Manual inspection test valve.
- UL-listed control panel.
- Auto-start on pressure drop.
- Auto-stop on pressure restoration.
- Minimum run period timer.
- NEMA 1 enclosure.
- Pre-mounted and wired.

Options

- Flow meter loop.
- City by-pass loop.
- 3-phase motor.



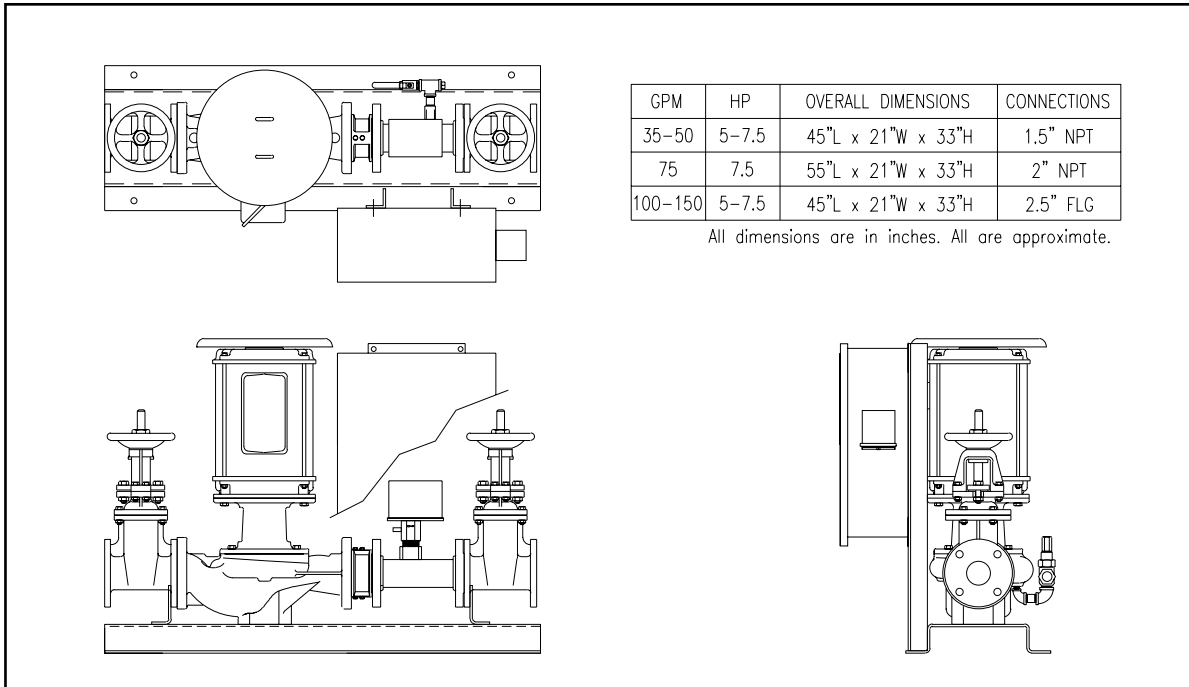
A-C 13R Residential Selection Chart

Pump Size	UL-listed Capacity (GPM)	Pressure Range (PSI)	HP/RPM
1.5 x 1.5 x 7F	35	40 - 65	5 HP/3550 RPM
	50	40 - 50	5 HP/3550 RPM
	35	70	7.5 HP/3550 RPM
	50	55 - 70	7.5 HP/3550 RPM
	75	50 - 65	7.5 HP/3550 RPM
2.5 x 2.5 x 7F	100	40	5 HP/3550 RPM
	100	45 - 55	7.5 HP/3550 RPM
	150	40 - 45	7.5 HP/3550 RPM

A-C Fire Pump



ITT Industries
Engineered for life



Specifications

A-C 13R Residential Fire Pump.

Residential occupancies up to and including four stories in height.

Contractor shall furnish and install an A-C 13R Residential from A-C Fire Pump for fire suppression in accordance with NFPA 13R and NFPA 20.

The pump shall be an A-C 1580 series, UL-listed for fire pump service. The pump shall be rated for _____ GPM and a differential pressure of _____ PSI while operating at 3550 RPM. The pump shall be supplied with a certified factory test curve. The motor shall be _____ HP, _____ phase, _____ volt of the JP shaft design open drip proof with a 1.15 service factor in accordance with NFPA 20 Section 6-5.

The control shall be an A-C Fire Pump Controller of the simplex or optional duplex design, UL-listed for NFPA 13R service. The enclosure shall be NEMA 1 design and supplied with overload protection, HOA switch, power on light, minimum run-period timer and ground lugs.

The pump system and control panel shall be mounted on a common base with a suction control valve, flow switch with contacts for remote alarm, isolation valve, suction and discharge gauges, casing relief valve and manual inspection test valve, all assembled and wired at the pump manufacturer's facility. Sensing lines are to be piped in the field. The complete unit shall be hydrostatically tested prior to shipment.



A-C Fire Pump

A-C Fire Pump
8200 N. Austin Avenue
Morton Grove, IL 60053
Phone: 847-966-3700
Fax: 847-966-1914
www.acfirepump.com

In Canada
Fluid Products Canada
55 Royal Road
Guelph, Ontario N1H 1T1 Canada
Tel: 519-821-1900
Fax: 519-821-2569