



**HORIZONTAL SPLIT CASE PUMPS
SINGLE STAGE DOUBLE SUCTION
Type A**

Typical Specifications

GENERAL: Pump shall be of the single stage horizontally split case type with suction and discharge connections located on opposite sides in the lower half casing, allowing removal of the rotating element without disturbing the pipe connections. The pump shall deliver a design capacity of _____GPM at a total head of _____feet and NPSH available of _____feet. The speed of the unit shall not exceed _____RPM. The pump shall have an efficiency of not less than _____% at specified operating condition.

CASING: The casing shall be of cast iron free from blow holes, sand pockets, and other detrimental defects. Water passageways shall be smooth to permit maximum efficiency. Casing shall be capable of withstanding a hydrostatic test pressure 150% of the maximum pumping pressure under which the pump could operate at the design speed.

IMPELLER: The impeller shall be made of cast bronze, double suction type. The impeller shall be balanced and keyed to the shaft and fixed in an axial position by shaft sleeves or shaft sleeve nuts.

CASING and IMPELLER RINGS: Renewable bronze wearing rings shall be shrunk on the impeller. Rings shall fit with close tolerances so as to permit a minimum of recirculation. Positive locking of the case wearing rings shall be provided so that the case rings will not rotate or change position in the case.

STUFFING BOXES: Stuffing boxes shall be large and deep and shall hold a minimum of five rows of graphited braided TFE packing and a bronze lantern water seal ring. The packing gland shall be split in two halves, so as to facilitate removal for repacking. Gland bolts shall be of the swing type made of steel.

SHAFT: The shaft shall be carbon steel adequately sized for the loads transmitted. The shaft shall be threaded to allow axial adjustment of the impeller by means of threaded sleeves or sleeve nuts.

SHAFT SLEEVES: The shaft shall be protected through the stuffing box by means of bronze shaft sleeves. They shall be so designed as to prevent leakage between the shaft itself and the shaft sleeve. They shall be locked in place so that they cannot back off if the pump is accidentally rotated in reverse direction. Shaft sleeves shall have a smooth surface so that packing pressure may be kept at a minimum.

BEARINGS: Bearings shall be designed for minimum B-10 life of 20,000 hours. The outboard bearing is to be of the angular-contact ball thrust type, while the inboard bearing may be a single row radial type ball bearing.

BASE: A steel base with drip rim (optional) of suitable size for mounting pump and driver shall be furnished. Pump and driver shall be carefully aligned and bolted in place prior to factory shipment. (Final alignment will be checked and certified after installation and prior to operation by user.)

COUPLING: A flexible coupling of the _____type shall be provided. Each pump mounted with a driver shall be equipped with a coupling guard.

**HORIZONTAL SPLIT CASE PUMPS
SINGLE STAGE DOUBLE SUCTION
Type A**



Peerless Pump Company
Indianapolis, IN 46207-7026

PUMP DATA - ENGLISH

Pump Size & Type	Discharge Flange Size ⑤	Suction Flange Size ⑤	Casing Thickness Nominal Inches	Corrosion Allowance	125 Lb. ANSI Suction 125 Lb. ANSI Discharge		125 Lb. ANSI Suction 250 Lb. ANSI Discharge		Priming Connection Size NPT	Casing Drain NPT	Shaft Diameter Through Impeller (Inches)			
					Max Work Press PSI ④	Max Test Press PSI	Max Work Press PSI ④	Max Test Press PSI			Imp.	Brg. Max. Bore	Cplg.	Stuff. Box
10A22B	10	12	0.75	0.12	175	262	200	300	1.25	1.00	3.375	2.756	2.750	3.000
12A16D ①	12	14	0.62	0.12	175	262	200	300	1.25	1.00	3.000	2.362	2.250	3.000
12AX19B	12	14	0.75	0.12	175	262	215	322	1.25	1.00	3.875	3.150	3.000	3.812
12A20B ①	12	14	0.75	0.12	175	262	200	300	1.25	1.00	3.375	2.756	2.750	3.000
12A22B	12	14	0.88	0.19	175	262	175	262	1.25	1.00	3.375	2.756	2.750	3.000
14A20B	14	16	0.75	0.12	150	225	160	240	1.50	1.00	3.375	2.756	2.750	3.000
14A22B	14	18	0.88	0.19	150	225	160	240	1.50	1.00	3.875	3.150	3.000	3.812
14A24B	14	16	1.25	0.25	150	225	230	345	1.50	1.00	3.875	3.150	3.000	3.812
16A18B	16	18	0.75	0.12	150	225	200	300	1.50	1.00	3.875	2.756	2.750	3.000
16A20B	16	18	0.88	0.19	150	225	150	225	1.50	1.00	4.625	3.740	3.625	4.500
18A22B	18	20	0.88	0.19	125	188	125	188	1.50	1.00	3.375	2.756	2.750	3.312
20AX25B ①	20	24	1.00	0.25	85	128	-	-	2.00	1.00	4.625	3.937	3.750	4.500
20A28 ①	20	24	1.00	0.25	100	150	-	-	2.00	1.00	4.625	3.937	3.750	4.500
24A28B	24	30	1.00	0.25	100	150	-	-	2.50 ③	1.50	4.375	3.543	3.500	4.000
10A20B ②	10	12	0.75	0.12	175	262	185	278	1.25	1.00	2.688	2.362	2.250	2.688
12A20B ① ②	12	14	0.75	0.12	175	262	200	300	1.25	1.00	3.375	2.756	2.750	3.000
16A18B ②	16	18	0.75	0.12	150	225	200	300	1.50	.75	3.875	2.756	2.750	3.000
18A22B ②	18	20	0.88	0.19	125	188	125	188	1.50	1.00	3.375	2.756	2.750	3.312
24A28B ②	24	30	1.00	0.25	100	150	-	-	2.50 ③	1.50	4.375	3.543	3.500	4.000

- ① Double volute.
- ② Bottom Suction Flange
- ③ 125 Lb. ANSI Flange
- ④ Based on a maximum temperature of 150° F. (65.5 ° C.).
- ⑤ All suction and discharge flange gauge connections are 1/4 NPT.



**HORIZONTAL SPLIT CASE PUMPS
SINGLE STAGE DOUBLE SUCTION
Type A**

PUMP DATA - ENGLISH (Continued)

Pump Size & Type	Stuffing Box								Bearings		Between Bearing Centers Inches
	Shaft Sleeve Diameter Inches	Bore Diameter Inches	Depth Inches	Face to Nearest Obstruction Inches	Size Packing Inches	No. of Rows of Packing	Width of Lantern Ring Inches	Width of Stuffing Box Bushing Inches	Thrust	Radial	
10A22B	3.500	4.750	5.25	4.88	0.62	6	0.88	0.25	ND-20314-DB	ND-3314	46.50
12A16D ①	3.500	4.750	5.25	3.19	0.62	6	0.88	0.25	ND-20312-DB	ND-3312	47.00
12AX19B	4.312	5.562	5.50	5.19	0.62	6	1.00	0.25	ND-20316-DB	ND-3316	52.00
12A20B ①	3.500	4.750	5.25	5.38	0.62	6	0.88	0.25	ND-20314-DB	ND-3314	52.00
12A22B	3.500	4.750	5.25	4.75	0.62	6	0.88	0.25	ND-20314-DB	ND-3314	49.50
14A20B	3.500	4.750	5.25	4.62	0.62	6	0.88	0.25	ND-20314-DB	ND-3314	52.00
14A22B	4.312	5.562	5.50	5.19	0.62	6	1.00	0.25	ND-20316-DB	ND-3316	55.00
14A24B	4.312	5.562	5.50	3.94	0.62	6	1.00	0.25	ND-20316-DB	ND-3316	53.00
16A18B	3.500	4.750	5.25	4.62	0.62	6	0.88	0.25	ND-20314-DB	ND-3314	47.50
16A20B	5.000	6.312	6.00	4.44	0.62	6	1.50	0.25	ND-20319-DB	ND-3319	58.00
18A22B	3.750	4.750	5.25	4.88	0.50	7	1.00	0.50	ND-20314-DB	ND-3314	60.00
20AX25B ①	5.000	6.500	6.88	4.69	0.75	6	1.50	0.38	ND-20320-DB	ND-3320	64.00
20A28 ①	5.000	6.500	6.88	4.69	0.75	6	1.50	0.38	MRC-7320-DB	MRC-320-S	64.00
24A28B	4.750	6.062	6.00	5.50	0.56	7	1.50	0.25	ND-20318-DB	ND-3318	72.00
10A20B ②	3.125	4.375	5.25	3.19	0.62	6	1.00	0.25	ND-20312-DB	ND-3312	42.50
12A20B ①②	3.500	4.750	5.25	5.38	0.62	6	0.88	0.25	ND-20314-DB	ND-3314	52.00
16A18B ②	3.500	4.750	5.50	5.38	0.62	6	0.88	0.25	ND-20314-DB	ND-3314	55.00
18A22B ②	3.750	4.750	5.25	4.88	0.50	7	1.00	0.50	ND-20314-DB	ND-3314	60.00
24A28B ②	4.875	6.062	6.00	5.50	0.56	7	1.50	0.25	ND-20318-DB	ND-3318	72.00

- ① Double volute.
- ② Bottom suction flange.

**Suction & Discharge Flange Operating Limits
Temperature - Pressure**

3 to 12 inch ANSI Flanges Only ③

Temperature Range		Maximum Working Pressure ANSI Flanges				Bearing Lubrication Recommendation
		125 Lb.		250 Lb ⑤		
° F.	° C.	PSI	BARS	PSI	BARS	
0 - 150	-17.8 to 65.5	175	12.06	400	27.56	Grease
151 - 200	66.1 to 93.3	165	11.37	370	25.49	Grease
201 - 230	93.9 to 110	155	10.68	350	24.11	Grease or Oil
231 - 250	110.5 to 121.1	150	10.33	340	23.43	Oil

- ③ For maximum working pressures and temperatures on 14 inch and larger ANSI flanges - refer to the factory.
- ⑤ Caution: Flange working pressure exceeds maximum working pressure of pump casing.

Subject to change without notice.

**HORIZONTAL SPLIT CASE PUMPS
SINGLE STAGE DOUBLE SUCTION
Type A**



Peerless Pump Company
Indianapolis, IN 46207-7026

PUMP DATA - METRIC

Pump Size & Type	Discharge Flange Size		Suction Flange Size		Casing Thick. Nom. mm	Corrosion Allowance	125 Lb. ANSI Suction 125 Lb. ANSI Discharge		125 Lb. ANSI Suction 250 Lb. ANSI Discharge		Prime Conn. Size NPT	Csg. Drain NPT	Shaft Diameter Through (mm)			
	Inch. ⑤	mm	Inch. ⑤	mm			Max Work Press BAR ④	Max Test Press BAR	Max Work Press BAR ④	Max Test Press BAR			Impeller	Brg. Max. Bore	Cplg.	Stuff. Box
10A22B	10	245.0	12	304.8	19.1	3.2	12.06	18.05	13.78	20.67	1.25	1.00	85.73	70	69.85	76.20
12A16D ①	12	304.8	14	355.6	15.7	3.2	12.06	18.05	13.78	20.67	1.25	1.00	76.20	60	57.15	76.20
12AX19B	12	304.8	14	355.6	19.1	3.2	12.06	18.05	14.81	22.18	1.25	1.00	98.43	80	76.20	96.84
12A20B ①	12	304.8	14	355.6	19.1	3.2	12.06	18.05	13.78	20.67	1.25	1.00	85.72	70	69.85	76.20
12A22B	12	304.8	14	355.6	22.3	4.8	12.06	18.05	12.06	18.05	1.25	1.00	85.72	70	69.85	76.20
14A20B	14	355.6	16	406.4	19.1	3.2	10.33	15.50	11.02	16.54	1.50	1.00	85.72	70	69.85	76.20
14A22B	14	355.6	18	457.2	22.3	4.8	10.33	15.50	11.02	16.54	1.50	1.00	98.42	80	76.20	96.84
14A24B	14	355.6	16	406.4	31.7	6.3	10.33	15.50	15.85	23.77	1.50	1.00	98.42	80	76.20	96.84
16A18B	16	406.4	18	457.2	19.1	3.2	10.33	15.50	13.78	20.67	1.50	1.00	98.42	70	69.85	76.20
16A20B	16	406.4	18	457.2	22.3	4.8	10.33	15.50	10.33	15.50	1.50	1.00	117.47	95	92.08	114.30
18A22B	18	457.2	20	508.0	22.3	4.8	8.61	12.95	8.61	12.95	1.50	1.00	85.72	70	69.85	84.14
20AX25B ①	20	508.0	24	609.6	25.4	4.8	5.85	8.82	-	-	2.00	1.00	117.47	100	95.25	114.30
20A28 ①	20	508.0	24	609.6	25.4	4.8	6.89	10.33	-	-	2.00	1.00	117.47	100	95.25	114.30
24A28B	24	609.6	30	762.0	25.4	4.8	6.89	10.33	-	-	2.5 ③	1.50	111.12	90	88.90	101.60
10A20B ②	10	254.0	12	304.8	19.1	3.2	12.06	18.05	12.74	19.15	1.25	1.00	68.26	60	57.15	68.26
12A20B ①②	12	304.8	14	355.6	19.1	3.2	12.06	18.05	13.78	20.67	1.25	1.00	85.72	70	69.85	76.20
16A18B ②	16	406.4	18	457.2	19.1	3.2	10.33	15.50	13.78	20.67	1.50	0.75	98.42	70	69.85	76.20
18A22B ②	18	457.2	20	508.0	22.3	4.8	8.61	12.95	8.61	12.95	1.50	1.00	85.72	70	69.85	84.14
24A28B ②	24	609.6	30	762.0	25.4	4.8	6.89	15.50	-	-	2.5 ③	1.50	111.12	90	88.90	101.60

- ① Double volute.
 - ② Bottom Suction Flange
 - ③ 125 Lb. ANSI Flange
 - ④ Based on a maximum temperature of 150° F. (65.5° C.).
 - ⑤ All suction and discharge flange gauge connections are 1/4 NPT.
- NPT = National (U.S.A.) Standard taper pipe threads
ANSI = American National Standards Institute, 125 and 250 Lb. flanges per B16.1

- Data Continued on page 5 -

Subject to change without notice



**HORIZONTAL SPLIT CASE PUMPS
SINGLE STAGE DOUBLE SUCTION
Type A**

PUMP DATA - METRIC (Continued)

Pump Size & Type	Stuffing Box								Bearings		Between Bearing Centers mm
	Shaft Sleeve Diameter mm	Bore Diameter mm	Depth mm	Face to Nearest Obstruction mm	Size Packing mm	No. of Rows of Packing	Width of Lantern Ring mm	Width of Stuffing Box Bushing mm	Thrust	Radial	
10A22B	88.90	120.65	133.35	123.83	15.87	6	22.22	6.35	ND-20314-DB	ND-3314	1181.10
12A16D ①	88.90	120.65	133.35	80.96	15.87	6	22.22	6.35	ND-20312-DB	ND-3312	1193.80
12AX19B	109.54	141.29	139.70	131.76	15.87	6	25.40	6.35	ND-20316-DB	ND-3316	1320.80
12A20B ①	88.90	120.65	133.35	136.52	15.87	6	22.22	6.35	ND-20314-DB	ND-3314	1320.80
12A22B	88.90	120.65	133.35	120.65	15.87	6	22.22	6.35	ND-20314-DB	ND-3314	1257.30
14A20B	88.90	120.65	133.35	117.47	15.87	6	22.22	6.35	ND-20314-DB	ND-3314	1320.80
14A22B	109.54	141.29	139.70	131.76	15.87	6	25.40	6.35	ND-20316-DB	ND-3316	1397.00
14A24B	109.54	141.29	139.70	100.01	15.87	6	25.40	6.35	ND-20316-DB	ND-3316	1346.20
16A18B	88.90	120.65	133.35	117.47	15.87	6	22.22	6.35	ND-20314-DB	ND-3314	1206.50
16A20B	127.00	160.34	152.40	112.71	15.87	6	38.10	6.35	ND-20319-DB	ND-3319	1473.20
18A22B	95.25	120.65	133.35	123.82	12.70	7	25.40	12.70	ND-20314-DB	ND-3314	1524.00
20AX25B ①	127.00	165.10	174.62	119.06	19.05	6	38.10	9.52	ND-20320-DB	ND-3320	1625.60
20A28 ①	127.00	165.10	174.62	119.06	19.05	6	38.10	9.52	MRC7320DB	MRC320S	1625.60
24A28B	120.65	153.99	152.40	139.70	14.29	7	38.10	6.35	ND-20318-DB	ND-3318	1828.80
10A20B ②	79.37	111.12	133.35	80.96	15.87	6	25.40	6.35	ND-20312-DB	ND-3312	1079.50
12A20B ①②	88.90	120.65	133.35	136.52	15.87	6	22.22	6.35	ND-20314-DB	ND-3314	1320.80
16A18B ②	88.90	120.65	139.70	136.52	15.87	6	22.22	6.35	ND-20314-DB	ND-3314	1397.00
18A22B ②	95.25	120.65	133.35	123.82	12.70	7	25.40	12.70	ND-20314-DB	ND-3314	1524.00
24A28B ②	123.82	153.99	152.40	139.70	14.29	7	38.10	6.35	ND-20318-DB	ND-3318	1828.80

- ① Double volute.
- ② Bottom suction flange.

**Suction & Discharge Flange Operating Limits
Temperature - Pressure**

3 In. (76.2 mm) to 12 inch (304.8 mm) ANSI Flanges Only ③

Temperature Range		Maximum Working Pressure ANSI Flanges				Bearing Lubrication Recommendation
		125 Lb.		250 Lb. ⑤		
° F.	° C.	PSI	BARS	PSI	BARS	
0 - 150	-17.8 to 65.5	175	12.06	400	27.56	Grease
151 - 200	66.1 to 93.3	165	11.37	370	25.49	Grease
201 - 230	93.9 to 110	155	10.68	350	24.11	Grease or Oil
231 - 250	110.5 to 121.1	150	10.33	340	23.43	Oil

- ③ For maximum working pressures and temperatures on 14 inch (355.60 mm) and larger ANSI flanges - refer to the factory.
- ⑤ Caution: Flange working pressure exceeds maximum working pressure of pump casing.

Subject to change without notice.

**HORIZONTAL SPLIT CASE SINGLE
 STAGE DOUBLE SUCTION
 Type A**



Pump Data - Continued

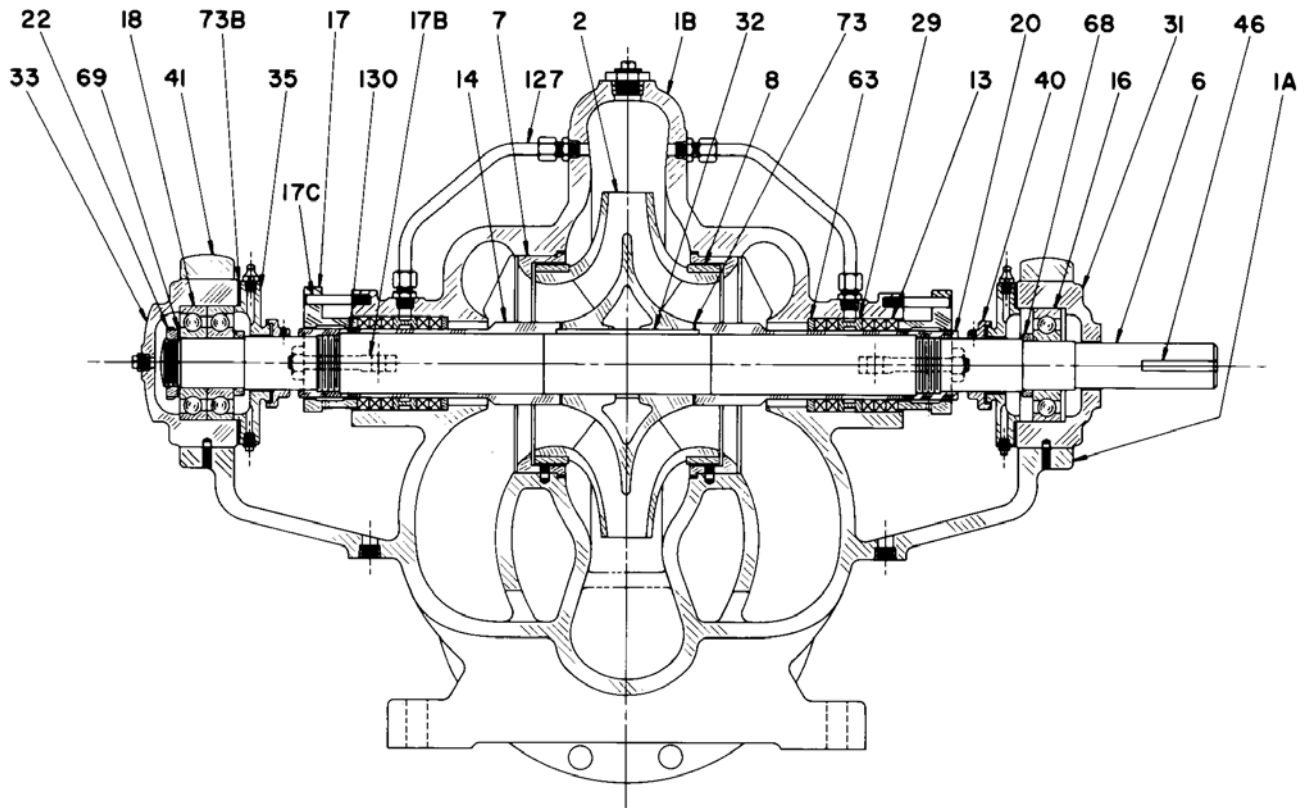
Pump Size & Type	Number of Gland Bolts and Degrees apart	Gland Bolt Circle in inches	Gland Bolt Dia. in Inches	Gland Bolt Circle in mm	Gland Bolt Dia. in mm
10A22B	2 @ 180°	7.50	5/8	190.50	15.88
12A16D	2 @ 180°	7.50	5/8	190.50	15.88
12AX19B	2 @ 180°	8.25	5/8	209.55	15.88
12A20B	2 @ 180°	8.25	5/8	209.55	15.88
12A22B	2 @ 180°	8.25	5/8	209.55	15.88
14A20B	2 @ 180°	8.25	5/8	209.55	15.88
14A22B	2 @ 180°	9.00	3/4	228.60	19.05
14A24B	2 @ 180°	9.00	3/4	228.60	19.05
16A18B	2 @ 180°	8.25	5/8	209.55	15.88
16A20B	2 @ 180°	9.75	3/4	247.65	19.05
18A22B	2 @ 180°	9.50	3/4	241.30	19.05
20AX25B	3 @ 120°	8.50	3/4	215.90	19.05
20A28	3 @ 120°	8.50	3/4	215.90	19.05
24A28B	2 @ 180°	9.75	3/4	247.65	19.05



HORIZONTAL SPLIT CASE PUMPS SINGLE STAGE DOUBLE SUCTION

Type 10A22B, 12A16D,
12A19G, 12A20B, 12A22B, 14A20C, 14A20G, 14A20N,
14A22C, 14A22G, 14A24C, 16A18B, 16A20B,
18A22B, 18A22C, 18A22G, 18A22N, 24A28B

Packed Type
Cross Sectional Drawing



4848560

**HORIZONTAL SPLIT CASE PUMPS
 SINGLE STAGE DOUBLE SUCTION**



Peerless Pump Company
 Indianapolis, IN 46207-7026

**Type 10A22B, 12A16D,
 12A19G, 12A20B, 12A22B, 14A20C, 14A20G,
 14A20N, 14A22C, 14A22G, 14A24C,
 16A18B, 16A20B, 18A22B, 18A22C,
 18A22G, 18A22N, 24A28B**

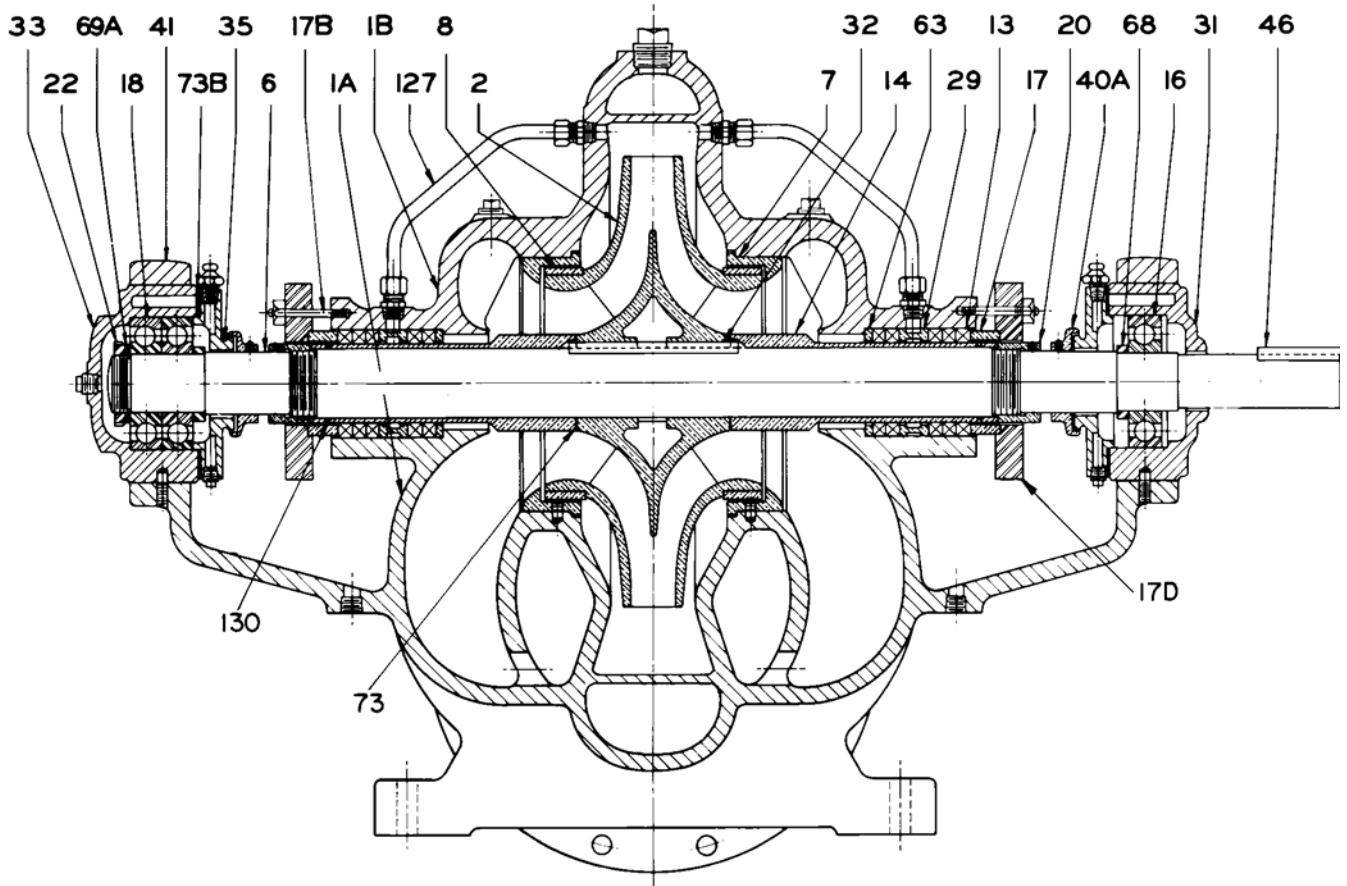
Materials of Construction Bronze Fitted Pumps

Item No.	Part Description	Material
1A, 1B, 41	Casing Assembly	Cast Iron
2	Impeller	Bronze
6	Shaft	4140Steel
6	Shaft - Optional	300 Series S. S.
6	Shaft - Optional	416 Stn. Steel
7	Casing Ring	Bronze
7A	Round Pin - Csg. Ring	Brass
8	Impeller Ring	Bronze
13	Packing Ring	Graphited TFE
14	Shaft Sleeve - Std.	Bronze
14	Shaft Sleeve - Optional	303 Stn. Stl.
14	Shaft Sleeve - Optional	416 SS Hardened
16	Inboard Ball Bearing	Assembly
17	Gland Assembly	Bronze
17B	Gland Bolt	Steel
17C	Gland Bolt Stud	Steel
17D	Gland Bolt Hex Nut	18-8 Stn. Steel
17E	Gland Screw	Steel
17F	Gland Guide Pin	Steel
18	Outboard Ball Bearing	Assembly
20	Sleeve Nut R. H. -Std.	Bronze
20	Sleeve Nut L. H. - Std.	Bronze
20	Sleeve Nut R. H. - Opt.	416 Stn. Steel
20	Sleeve Nut L. H. - Opt.	416 Stn. Steel
20A	Set Screw - Sleeve Nut	18-8 Stn. Stl.
22	Bearing Locknut	Steel
29	Lantern Ring	Bronze
31	Inboard Bearing Housing	Cast Iron
32	Impeller Key	Steel
32	Impeller Key (for SS Shaft)	Stn. Steel
33	Outboard Bearing Housing	Cast Iron
35	Bearing Cover	Cast Iron
40	Water Deflector	Bronze
40A	Set Screw - Deflector	18-8 Stn. Stl.
46	Coupling Key	Steel
63	Stuffing Box Bushing	Bronze
68	Shaft Collar	Steel
69A	Bearing Lockwasher	Steel
73A	Casing Gasket	Vegetable Fiber
73B	Bearing Housing Gasket	Vegetable Fiber
130	"O"-Ring - Shaft Sleeve	Buna N Rubber



**HORIZONTAL SPLIT CASE PUMPS
SINGLE STAGE DOUBLE SUCTION
Type 20AX25B, 20A28**

**Cross Sectional Drawing
Packed Type**



4851200

**HORIZONTAL SPLIT CASE PUMPS
 SINGLE STAGE DOUBLE SUCTION
 Type 20A25B, 20A28**



Peerless Pump Company
 Indianapolis, IN 46207-7026

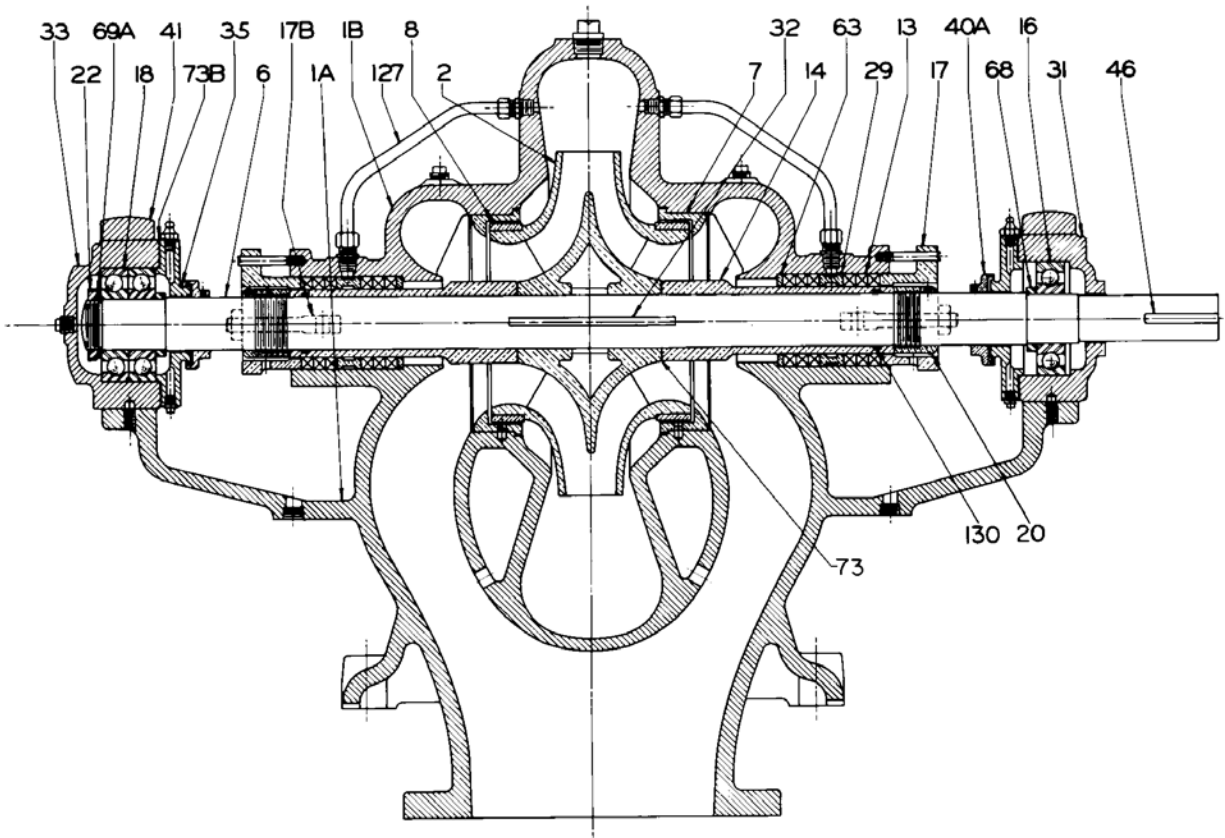
Materials of Construction - Bronze Fitted Pumps

Item No.	Part Description	Material
1A, 1B, 41	Casing Assembly	Cast Iron
2	Impeller w/Rings Specify Dia.	Bronze
6	Shaft	4140Steel
6	Shaft - Optional	300 Series S. S.
6	Shaft - Optional	416 Stn. Steel
7	Casing Ring	Bronze
7A	Round Pin - Casing. Ring	Brass
8	Impeller Ring	Bronze
13	Packing Ring	Graphited TFE
14	Shaft Sleeve - Std.	Bronze
14	Shaft Sleeve - Optional	303 Stn. Stl.
14	Shaft Sleeve - Optional	416 SS Hardened
16	Inboard Ball Bearing	Assembly
17	Gland Sleeve Half	Bronze
17B	Gland Flange Stud	Steel
17D	Gland Flange	Steel
18	Outboard Ball Bearing	Assembly
20	Sleeve Nut R. H.-Std.	Bronze
20	Sleeve Nut L. H. - Std.	Bronze
20	Sleeve Nut R. H. - Optional	416 Stn. Steel
20	Sleeve Nut L. H. - Optional	416 Stn. Steel
20A	Set Screw - Sleeve Nut	18-8 Stn. Stl.
22	Bearing Locknut	Steel
29	Lantern Ring	Bronze
31	Inboard Bearing Housing	Cast Iron
32	Impeller Key	Steel
32	Impeller Key (for SS Shaft)	Stn. Steel
33	Outboard Bearing Housing	Cast Iron
35	Bearing Cover	Cast Iron
40	Water Deflector	Bronze
40A	Set Screw - Deflector	18-8 Stn. Stl.
46	Coupling Key	Steel
63	Stuffing Box Bushing	Bronze
68	Shaft Collar	Steel
69A	Bearing Lockwasher	Steel
73A	Casing Gasket	Vegetable Fiber
73B	Bearing Housing Gasket	Vegetable Fiber
130	"O"-Ring - Shaft Sleeve	Buna N Rubber



**HORIZONTAL SPLIT CASE PUMPS
SINGLE STAGE DOUBLE SUCTION
Type 10A20B,12A20B, 16A18B,
18A22C,18A22G, 18A22N, 24A28B**

**Cross Sectional Drawing
Packed Type
Bottom Suction**



4851193

BLANK